

CILINDER PNC, PNCG / CYLINDER PNC, PNCG

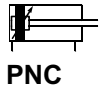
VDMA24562 DIN ISO 15552

Tehnični podatki / Technical data

Medij / Fluid	filtriran, suh ali naoljen komprimiran zrak / filtered, dry or oiled compressed air
Delovni tlak / Working pressure	max. 10 bar
Temperatura / Temperature	-20 °C ~ +80 °C

Material	
Pokrovi / End caps	Aluminij / Aluminium
Cev / Tube	Aluminij / Aluminium
Batnica / Rod	X20Cr13
Vodilna puša / Guide	bronza / bronze
Tesnila / Seals	PU, NBR

PNC



PNCG



i Vsi PNC in PNCG cilindri so opremljeni z magnetom na batni in nastavljamim končnim dušenjem na obeh straneh. Mazanje pri filtriranem in sušenem zraku ni potrebno! / All PNC and PNCG cylinders are equipped with magnet on the piston and adjustable end cushioning on both ends. Lubricating is not necessary when filtered, dry air is used.

PRIMER NAROČANJA / HOW TO ORDER

Tip cilindra / Type of cylinder - DDA -

- PNC: ...cilinder s T-utori / cylinder with T-slots
- PNCG: ...cilinder z okroglo cevjo / cylinder with round tube

Nazivni premer / Diameter

- PNC: ...32, 40, 50, 63, 80, 100, 125
- PNCG: ...32, 40, 50, 63, 80, 100, 125, 160, 200, 250, 320

Hod / Stroke

Izvedba / Version

- KP: ...podaljšana batnica za uporabo zavore gibanja (stran 14) / extended rod for implementation of rod brake (page 14)

Izvedba / Version

- S2: ...skoznja batnica/through rod
- S6: ...tesnila za povišano temperaturo do 130 °C – brez magneta / seals for high temperature up to 130 °C – without magnet

Dodatna opcija / Additional option

- E: ...podaljšana batnica / extended rod

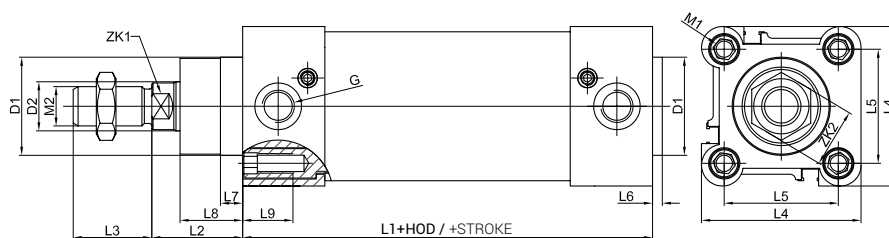
NOSILEC SENZORJA za cilindre PNCG SENSOR HOLDER for PNCG cylinders



HOC – ■
Ø CILINDRA
Ø OF CYLINDER

i Senzorji stran 38
Sensors page 38

Ø	Teža / Weight [kg] (hod / stroke = 0 mm)	Teža / Weight [kg] vsakih / per every 10 mm
32	0,64	0,02
40	0,69	0,05
50	1,37	0,05
63	1,88	0,06
80	3,18	0,09
100	4,44	0,09
125	8,30	0,15
160	13,40	0,25
200	18,50	0,33
250	30,80	0,36
320	53,20	0,57

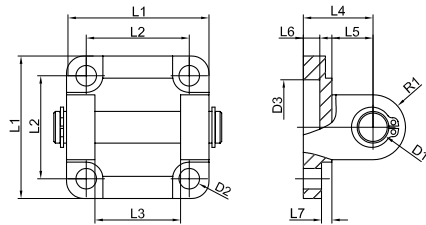


Tip in Ø cil Type and Ø cyl	L1	L2	L3	L4	L5	L6	L7	L8	L9	ØD1	ØD2	M1	M2	ZK1	ZK2	G
32*	94	26	22	47	32,5	4	9,5	18	16,5	30	12	M6	M10x1,25	10	17	G1/8
40*	105	30	24	54	38	4	9,5	22	16,5	35	16	M6	M12x1,25	13	19	G1/4
50*	106	37	32	63	46,5	4	9,5	25,5	17,5	40	20	M8	M16x1,5	17	24	G1/4
63*	121	37	32	74	56,5	4	9,5	25	17,5	45	20	M8	M16x1,5	17	24	G3/8
80*	128	46	40	93,5	72	4	10	35	17,5	45	25	M10	M20x1,5	22	30	G3/8
100*	138	51	40	110	89	4	10	38	17,5	55	25	M10	M20x1,5	22	30	G1/2
125	160	65	54	137,5	110	6	11	46	20,5	60	32	M12	M27x2	27	41	G1/2
160	179,5	80	72	180	140	6	21,5	50	24	65	40	M16	M36x2	36	55	G3/4
200	180	95	72	220	175	6	26,5	55	24	75	40	M16	M36x2	36	55	G3/4
250	200	105	84	268	220	10	20	67	25	90	50	M20	M42x2	46	65	G1
320	220	120	96	340	270	10	20	82	28	110	63	M24	M48x2	55	75	G1

*PNCG 32 - 100 cilindri so na voljo tudi v INOX izvedbi. Pri naročilu se doda oznaka CR. / PNCG 32 - 100 cylinders are available in INOX version. At the beginning of order code add CR.

PRITRDITVE ZA CILINDRE VDMA 24562 IN ISO 15552 / ACCESSORIES FOR CYLINDERS VDMA 24562 AND ISO 15552

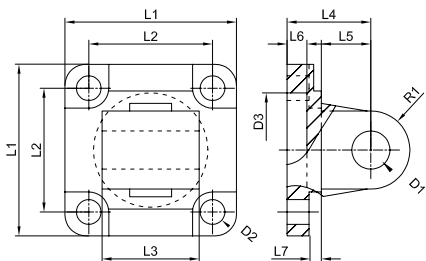
SBG Ø32-Ø320



Ø	L1	L2	L3	L4	L5	L6	L7	ØD1	ØD2	ØD3	R1	m [kg]
32*	45	32,5	26	22	13	5	4,5	10	6,6	30	10	0,17
40*	52	38	28	25	16	5	4,5	12	6,6	35	12	0,28
50*	65	46,5	32	27	16	5	3,5	12	9	40	12	0,40
63*	75	56,5	40	32	21	5	5,5	16	9	45	16	0,65
80*	93	72	50	36	22	5	4	16	11	45	16	1,15
100*	110	89	60	41	27	5	6	20	11	55	20	1,95
125	134	110	70	50	30	7	10	25	13,5	60	25	3,88
160	180	140	90	55	35	7	10	30	18	65	25	6,73
200	220	175	90	60	35	7	9	30	18	75	25	9,88
250	270	220	110	70	45	11	12	40	20	90	40	18,0
320	350	270	120	80	50	15	13	45	24	110	45	33,7

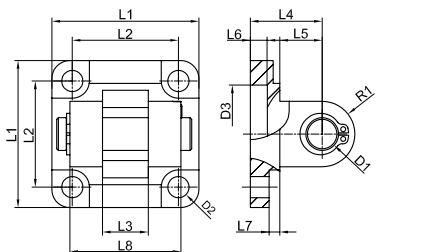
*INOX

SGL Ø32-Ø320



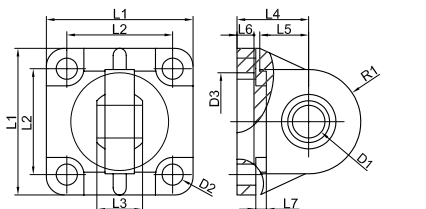
Ø	L1	L2	L3	L4	L5	L6	L7	ØD1	ØD2	ØD3	R1	m [kg]
32	45	32,5	26	22	13	5	4,5	10	6,6	30	10	0,18
40	52	38	28	25	16	5	4,5	12	6,6	35	12	0,27
50	65	46,5	32	27	16	5	3,5	12	9	40	12	0,37
63	75	56,5	40	32	21	5	5,5	16	9	45	16	0,68
80	93	72	50	36	22	5	4	16	11	45	16	1,20
100	110	89	60	41	27	5	6	20	11	55	20	2,10
125	134	110	70	50	30	7	10	25	13,5	60	25	3,74
160	180	140	90	55	35	7	10	30	18	65	25	5,89
200	220	175	90	60	35	10	9	30	18	75	25	8,47
250	270	220	110	70	45	11	12	40	20	90	40	16,85
320	350	270	120	80	50	15	13	45	24	110	45	31,75

SGN Ø32-Ø125



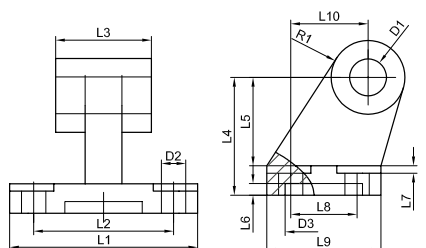
Ø	L1	L2	L3	L4	L5	L6	L7	L8	ØD1	ØD2	ØD3	R1	m [kg]
32	45	32,5	14	22	13	5	3,5	34	10	6,6	30	10	0,17
40	52	38	16	25	16	5	3,5	40	12	6,6	35	12	0,27
50	65	46,5	21	27	16	5	4,5	45	16	9	40	14	0,42
63	75	56,5	21	32	21	5	4,5	51	16	9	45	18	0,64
80	95	72	25	36	22	5	4	65	20	11	45	20	1,37
100	115	89	25	41	27	5	4	75	20	11	55	22	2,05
125	140	110	37	50	30	7	10	97	25	13,5	60	25	4,16

SSG Ø32-Ø125



Ø	L1	L2	L3	L4	L5	L6	L7	ØD1	ØD2	ØD3	R1	m [kg]
32	45	32,5	14	22	13	7	4,5	10	6,6	30	16	0,15
40	52	38	16	25	16	7	4,5	12	6,6	35	18	0,26
50	65	46,5	21	27	16	7	3,5	16	9	40	21	0,36
63	75	56,5	21	32	21	7	5,5	16	9	45	23	0,60
80	95	72	25	36	22	9	6	20	11	45	28	1,12
100	115	89	25	41	27	9	6	20	11	55	30	1,79
125	140	110	37	50	30	9	10	30	13,5	60	40	3,50

LG Ø32-Ø125

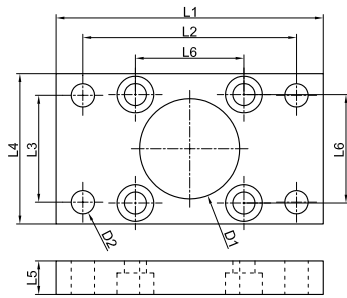


Ø	L1	L2	L3	L4	L5	L6	L7	L8	L9	L10	ØD1	ØD2	ØD3	R1	m [kg]
32*	51	38	26	32	24	3	1,6	18	31	21	10	6,6	20	10	0,16
40*	54	41	28	36	26	3	1,6	22	35	24	12	6,6	20	11	0,24
50*	65	50	32	45	33	3	1,6	30	45	33	12	9	20	13	0,42
63*	67	52	40	50	36	3	1,6	35	50	37	16	9	20	15	0,53
80*	86	66	50	63	49	3	2,5	40	60	47	16	11	20	15	1,06
100*	96	76	60	71	54	3	2,5	50	70	55	20	11	20	19	1,51
125	124	94	70	90	70	3	3,2	60	90	70	25	14	20	22,5	3,15

*INOX

*Označene pritrditve so na voljo tudi v INOX izvedbi. Pri naročilu se doda oznaka CR / Marked accessories are available in INOX version. At the beginning of order code add CR.

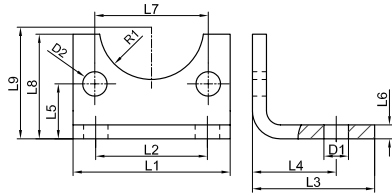
FG Ø32-Ø200



Ø	L1	L2	L3	L4	L5	L6	ØD1	ØD2	m [kg]
32*	80	64	32	45	10	32,5	30	7	0,19
40*	90	72	36	52	10	38	35	9	0,25
50*	110	90	45	65	12	46,5	40	9	0,48
63*	120	100	50	75	12	56,5	45	9	0,63
80*	150	126	63	95	16	72	45	12	1,44
100*	170	150	75	115	16	89	55	14	1,99
125	205	180	90	140	20	110	60	16	3,78
160	260	230	115	180	20	140	65	18	6,36
200	300	270	135	220	25	175	75	22	11,4

*INOX

HG Ø32-Ø200

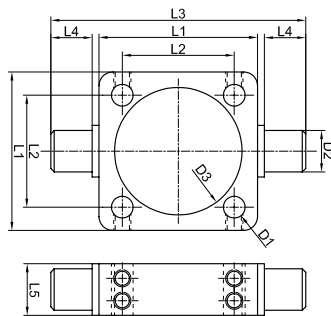


i Set vsebuje 2 kosa
Set contains 2 pcs

Ø	L1	L2	L3	L4	L5	L6	L7	L8	L9	ØD1	ØD2	R1	m [kg]
32*	45	32	35	24	15,75	4	32,5	30	32	7	7	15	0,07
40*	52	36	36	28	17	4	38	30	36	10	7	17,5	0,08
50*	65	45	47	32	21,75	5	46,5	36	45	10	9	20	0,17
63*	75	50	45	32	21,75	5	56,5	35	50	10	9	22,5	0,19
80*	95	63	55	41	27	6	72	47	63	12	11	22,5	0,38
100*	115	75	57	41	26,5	6	89	53	71	14,5	11	27,5	0,45
125	140	90	70	45	35	8	110	70	90	16,5	14	30	1,15
160	180	115	75	60	45	10	140	100	115	18,5	18	32,5	2,00
200	220	135	100	70	47,5	12	175	109	135	24	18	37,5	3,80

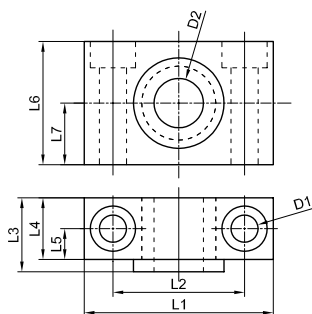
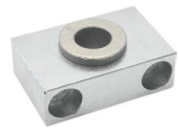
*INOX

ZK Ø32-Ø320



Ø	L1	L2	L3	L4	L5	ØD1	ØD2	ØD3	m [kg]
32	46	32,5	74	12	15	6,25	12	37	0,13
40	59	38	95	16	20	6,25	16	46	0,31
50	69	46,5	107	16	20	8,25	16	56	0,37
63	84	56,5	130	20	25	8,25	20	69	0,69
80	102	72	150	20	25	10,25	20	87	0,89
100	125	89	182	25	30	10,25	25	107	1,58
125	155	110	210	25	32	12,25	25	133	2,60
160	190	140	264	32	40	16,25	32	170	4,30
200	240	175	312	32	40	16,25	32	214	7,45
250	295	220	400	40	50	20,25	40	264	13,34
320	370	270	500	50	70	24,25	50	338	27,38

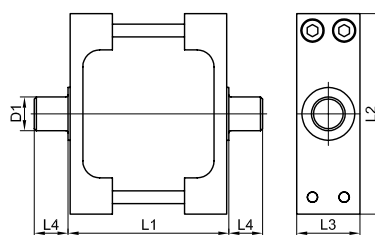
LZ Ø32-Ø200



i Set vsebuje 2 kosa
Set contains 2 pcs

Ø	L1	L2	L3	L4	L5	L6	L7	ØD1	ØD2	m [kg]
32	46	32	18	15	7,5	30	15	6,6	12	0,10
40	55	36	21	18	9	36	18	9	16	0,15
50	55	36	21	18	9	36	18	9	16	0,15
63	65	42	23	20	10	40	20	11	20	0,23
80	65	42	23	20	10	40	20	11	20	0,23
100	75	50	28,5	25	12,5	50	25	14	25	0,44
125	75	50	28,5	25	12,5	50	25	14	25	0,44
160	92	60	40	35	17,5	60	30	18	32	0,85
200	92	60	40	35	17,5	60	30	18	32	0,85

ZKC Ø32-Ø125

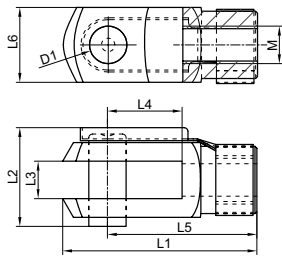


i Samo za tip cilindra PNC
For cylinder type PNC only.

Ø	L1	L2	L3	L4	ØD1	m [kg]
32	50	65	25	11,5	12	0,18
40	63	75	25	16	16	0,32
50	75	95	30	16	16	0,57
63	90	105	30	20	20	0,66
80	110	130	30	20	20	0,90
100	132	145	40	24,5	25	1,50
125	160	176	40	24,5	25	1,77

*Označene pritrditve so na voljo tudi v INOX izvedbi. Pri naročilu se doda oznaka CR / Marked accessories are available in INOX version. At the beginning of order code add CR.

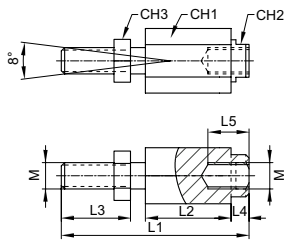
SG



Tip Type	M	L1	L2	L3	L4	L5	L6	ØD1	m [kg]
SGM10x1,25*	M10x1,25	52	26	10	20	40	20	10	0,09
SGM12x1,25*	M12x1,25	62	32	12	24	48	24	12	0,12
SGM16x1,5*	M16x1,5	83	39	16	32	64	32	16	0,33
SGM20x1,5*	M20x1,5	105	53	20	40	80	40	20	0,70
SGM27x2	M27x2	148	74	30	54	110	55	30	1,46
SGM36x2	M36x2	188	90,5	35	72	144	70	35	3,27
SGM42x2	M42x2	232	104,3	42	84	168	85	42	7,52
SGM48x2	M48x2	265	117,3	50	96	192	96	50	10,03

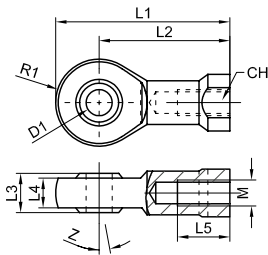
*INOX

FK



Tip Type	M	L1	L2	L3	L4	L5	CH1	CH2	CH3	m [kg]
FKM10x1,25	M10x1,25	71,5	35	20	9	23	30	19	17	0,22
FKM12x1,25	M12x1,25	74,5	35	24	9	23	30	19	19	0,23
FKM16x1,5	M16x1,5	104	53	32	9	32	41	27	24	0,66
FKM20x1,5	M20x1,5	119	53	40	16	39	41	27	30	0,70

SGS



Tip Type	M	L1	L2	L3	L4	L5	ØD1	R1	CH	Z°	m [kg]
SGSM10x1,25	M10x1,25	57	43	14	10,5	20	10	14	17	13	0,08
SGSM12x1,25	M12x1,25	66	50	16	12	22	12	16	19	13	0,11
SGSM16x1,5	M16x1,5	85	64	21	15	28	16	21	22	15	0,22
SGSM20x1,5	M20x1,5	102	77	25	18	33	20	25	30	14	0,41
SGSM27x2	M27x2	145	110	37	25	51	30	35	41	17	1,12
SGSM36x2	M36x2	165	125	43	28	56	35	40	50	16	1,60

*Označene pritrditve so na voljo tudi v INOX izvedbi. Pri naročilu se doda oznaka CR / Marked accessories are available in INOX version. At the beginning of order code add CR.