

CILINDER PCW, ECW / CYLINDER PCW, ECW

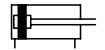
Tehnični podatki / Technical data

Medij / Fluid	filtriran, suh ali naoljen komprimiran zrak / filtered, dry or oiled compressed air
Delovni tlak / Working pressure	max. 10 bar
Temperatura / Temperature	0 °C ~ +80 °C

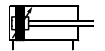
Material	
Pokrovi / End caps	Aluminij / Aluminium
Cev / Tube	X 5 Cr Ni 18 9
Batnica / Rod	X 20 Cr 13
Vodilna puša / Guide	bronza / bronze
Tesnila / Seals	PU



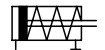
PCW-A



PCW-DDA



ECW



i Vsi PCW in ECW cilindri so opremljeni z magnetom na batni. Mazanje pri filtriranem in sušenem zraku ni potrebno! / All PCW and ECW cylinders are equipped with magnet on the piston. Lubricating is not necessary when filtered, dry air is used!

PRIMER NAROČANJA / HOW TO ORDER

Tip cilindra / Type of cylinder

- PCW: ...dvostransko delujoč cilinder / double acting cylinder
- ECW: ...enostransko delujoč cilinder s povratno vzmetjo / single acting cylinder with return spring

Nazivni premer / Diameter

- PCW: ...32, 40, 50, 63
- ECW: ...32, 40, 50, 63

Hod / Stroke

- ECW: ...max. 50 mm

Izvedba / Feature

- DDA: ...obojestransko nastavljivo končno dušenje / both end adjustable cushioning
- A: ...PU obroči v končnih legah / PU rings at the end positions

Opcija / Option

- S2: ...skoznja batnica / through rod

Dodatna opcija / Additional option

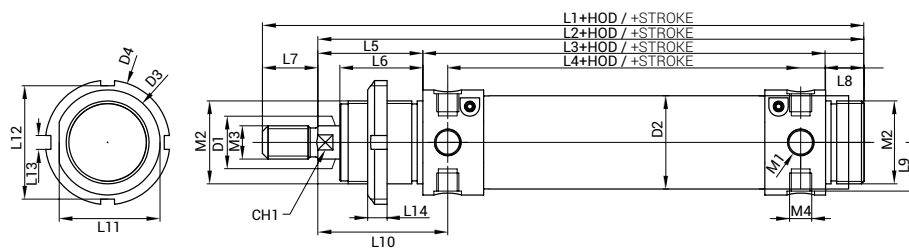
- E: ...podaljšana batnica / extended rod

NOSILEC SENZORJA SENSOR HOLDER



SMBR - 8 -
Ø CILINDRA
Ø OF CYLINDER

i Senzorji stran 38
Sensors page 38



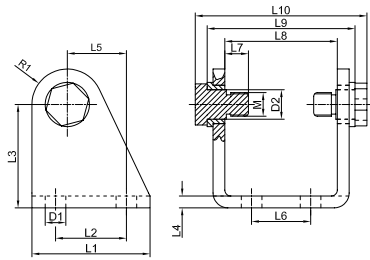
Ø	Teža / Weight [kg] (hod / stroke = 0 mm)	Teža / Weight [kg] vsakih / per every 10 mm
32	0,45	0,02
40	0,79	0,03
50	1,41	0,05
63	1,74	0,05

Tip in Ø cil Type and Ø cyl	L1	L2	L3	L4	L5	L6	L7	L8	L9	L10	L11	L12	L13	L14	ØD1	ØD2	ØD3	ØD4	M1	M2	M3	M4
32*	168	148	96	78	38	30	20	14	17,5	47	36,5	40	5	7	12	33,6	38	45	G1/8	M30x1,5	M10	M8x1
40*	198	174	113	89	45	35	24	16	21	57	44	46	5	8	16	41,6	46	50	G1/4	M38x1,5	M12	M10x1
50*	220	188	120	96	50	38	32	18	26,5	62	55	52	6	9	20	52,4	57	58	G1/4	M45x1,5	M16	M12x1,5
63*	224	192	124	98	50	38	32	18	32,5	63	67,5	52	6	9	20	65,4	70	58	G3/8	M45x1,5	M16	M14x1,5

*PCW 32, 40, 50 in 63A cilindri so na voljo tudi v INOX izvedbi. Pri naročilu se doda oznaka CR. / PCW 32, 40, 50 in 63A cylinders are available in INOX version. At the beginning of order code add CR.

PRITRDITVE ZA CILINDRE PCW, ECW / ACCESSORIES FOR CYLINDERS PCW, ECW

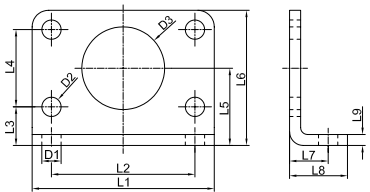
SBW



Ø	L1	L2	L3	L4	L5	L6	L7	L8	L9	L10	M1	ØD1	ØD2	R1	m [kg]
32*	40	24	35	4	20	20	6	38,1	50,1	58,1	M8x1	7	12	12	0,14
40*	50	30	40	5	27	28	7	46,1	60,1	70,1	M10x1	9	15	13	0,25
50*	54	34	45	6	30	36	9	57,1	74,1	86,1	M12x1,5	9	18	14	0,31
63*	65	35	50	6	34	42	13	70,1	87,1	99,1	M14x1,5	9	20	16	0,38

*INOX

HBW

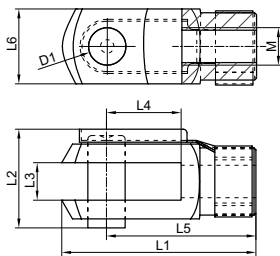


Ø	L1	L2	L3	L4	L5	L6	L7	L8	L9	ØD1	ØD2	ØD3	m [kg]
32*	66	52	14	28	28	49	14	21	4	7	7	30	0,24
40*	80	60	18	30	33	58	20	30	5	9	9	38	0,41
50*	90	70	20	40	40	70	20	30	6	9	9	45	0,62
63*	96	76	20	50	45	80	20	30	6	9	9	45	0,76

*INOX

i Set vsebuje 2 kosa
Set contains 2 pcs

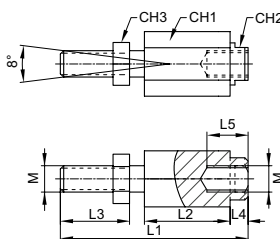
SG



Tip Type	M	L1	L2	L3	L4	L5	L6	ØD1	m [kg]
SGM10*	M10	52	26	10	20	40	20	10	0,09
SGM12*	M12	62	32	12	24	48	24	12	0,15
SGM16*	M16	83	39	16	32	64	32	16	0,33

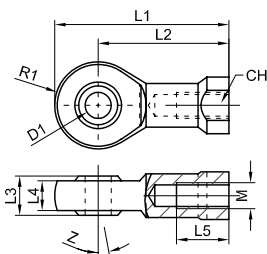
*INOX

FK



Tip Type	M	L1	L2	L3	L4	L5	CH1	CH2	CH3	m [kg]
FKM10	M10	71,5	35	20	9	23	30	19	17	0,22
FKM12	M12	75,5	35	24	9	23	30	19	19	0,23
FKM16	M16	104	53	32	9	32	41	27	24	0,66

SGS



Tip Type	M	L1	L2	L3	L4	L5	ØD1	R1	CH	Z°	m [kg]
SGSM10	M10	57	43	14	10,5	20	10	14	17	13	0,08
SGSM12	M12	66	50	16	12	22	12	16	19	13	0,11
SGSM16	M16	85	64	21	15	28	16	21	22	15	0,22

*Označene pritrditve so na voljo tudi v INOX izvedbi. Pri naročilu se doda oznaka CR / Marked accessories are available in INOX version. At the beginning of order code add CR.