

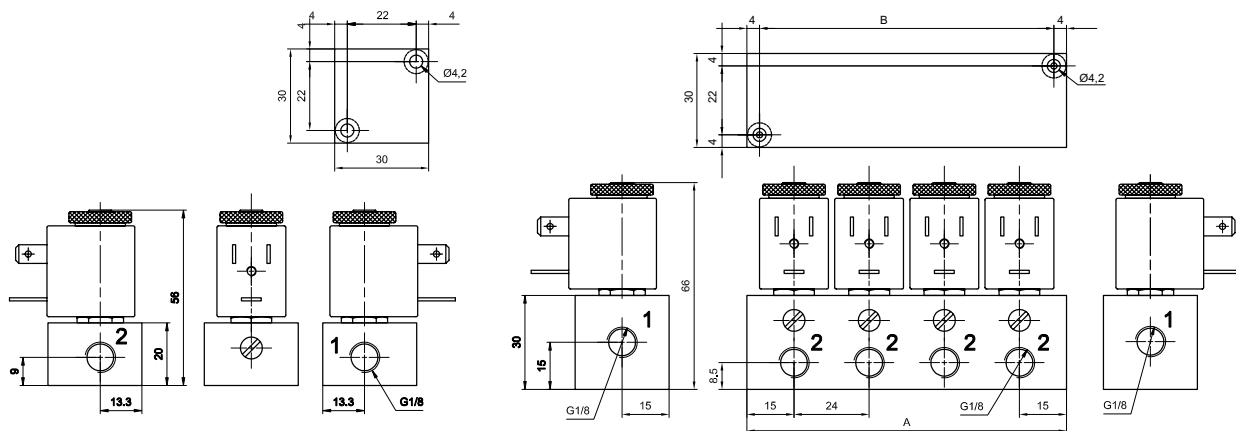
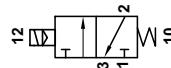
## Električno krmiljeni ventili MV / Solenoid actuated valves MV

### MV22 1 / 2 / 3 / 4 / 5 / 6

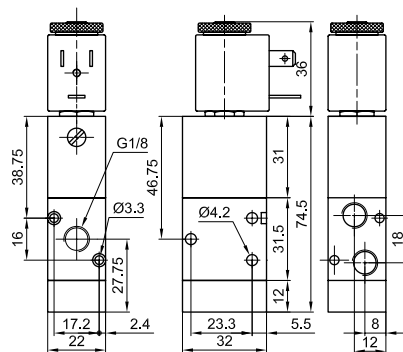


#### 3/2 ventil, elektro krmiljen, normalno zaprt (z ročnim vklopom) 3/2 solenoid Valve, N.C., (Manual turn on)

Temperatura / Temperature	max. +60 °C
Tlak / Pressure	0–10 bar
Pretok / Flow (5 bar)	35 l/min
Navoj / Thread	G 1/8

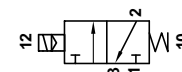


### MV3218

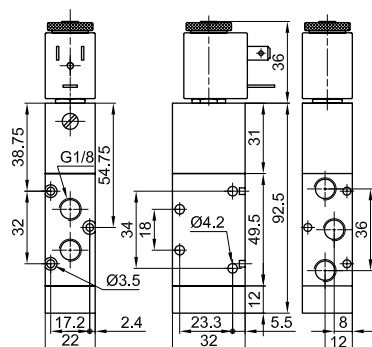


#### 3/2 ventil, elektro krmiljen, normalno zaprt (z ročnim vklopom) 3/2 solenoid Valve, N.C. (Manual turn on)

Temperatura / Temperature	max. +60 °C
Tlak / Pressure	1,5–10 bar
Pretok / Flow (5 bar)	550 l/min
Navoj / Thread	G 1/8



### MV5218



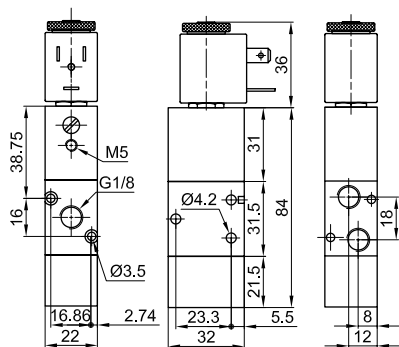
#### 5/2 ventil, elektro krmiljen (z ročnim vklopom) 5/2 solenoid Valve, (Manual turn on)

Temperatura / Temperature	max. +60 °C
Tlak / Pressure	1,5–10 bar
Pretok / Flow (5 bar)	550 l/min
Navoj / Thread	G 1/8



**i** Vsi ventili so mazani s trajnim mazivom. Mazanje pri filtriranem in sušenem zraku ni potrebno!  
All valves are greased with permanent grease. Lubrication is not necessary when filtered, dry air is used!

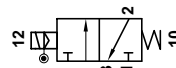
## MV3218P



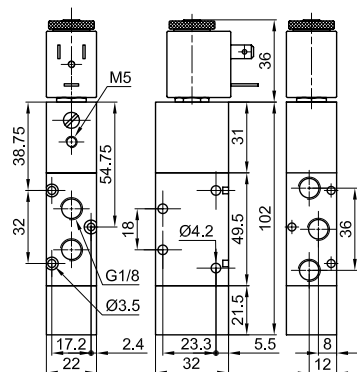
**3/2 ventil, normalno zaprt, dodatno napajanje**  
(z ročnim vklopom)

3/2 solenoid Valve, N.C., External air supply (Manual turn on)

Temperatura / Temperature	max. +60 °C
Tlak / Pressure	-0,95–10 bar
Pretok / Flow (5 bar)	550 l/min
Navoj / Thread	G 1/8



## MV5218P



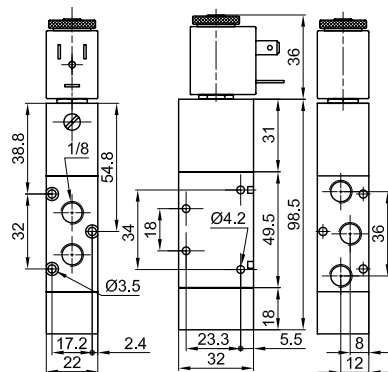
**5/2 ventil, dodatno napajanje (z ročnim vklopom)**

5/2 solenoid Valve, External air supply (Manual turn on)

Temperatura / Temperature	max. +60 °C
Tlak / Pressure	-0,95–10 bar
Pretok / Flow (5 bar)	550 l/min
Navoj / Thread	G 1/8



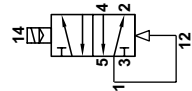
## MV5218L



**5/2 ventil, elektro krmiljen, vrača ga zrak**  
(z ročnim vklopom)

5/2 solenoid Valve, Air returned (Manual turn on)

Temperatura / Temperature	max. +60 °C
Tlak / Pressure	1,5–10 bar
Pretok / Flow (5 bar)	550 l/min
Navoj / Thread	G 1/8



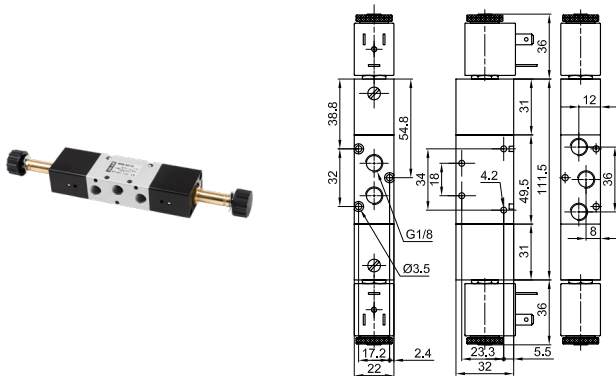
## TEHNIČNI PODATKI ZA MV...18 / TECHNICAL DATA FOR MV...18

Medij / Fluid	Zrak, filtriran 40 µm, naoljen* ali nenaoljen Filtered Air 40µm, lubricated* or not	
Magneti in konektorji / Coils and connectors	MS22 + KON22**	
Material	Telo ventila / Body valve	Aluminij / Aluminium
	Tesnila / Seals	NBR
	Vzmet / Spring	INOX
	Vreteno / Spool	Aluminij / Aluminium
	Notranji del / Interior parts	Medenina / Brass

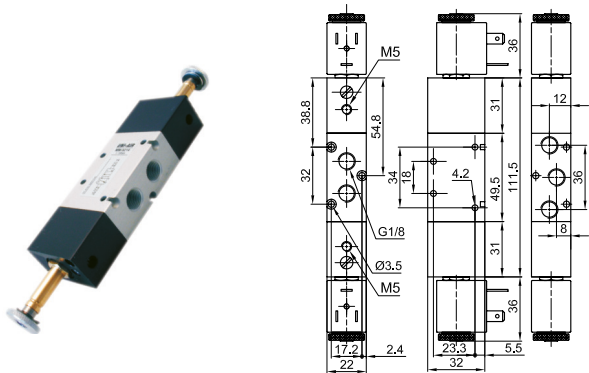
**i** Vsi ventili so mazani s trajnim mazivom. Mazanje pri filtriranem in sušenem zraku ni potrebno!  
All valves are greased with permanent grease. Lubrication is not necessary when filtered, dry air is used!

\*Uporabljati samo olje ISO VG 32 klasa 1 / Use only ISO VG 32 Class 1 Lubricant

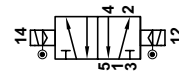
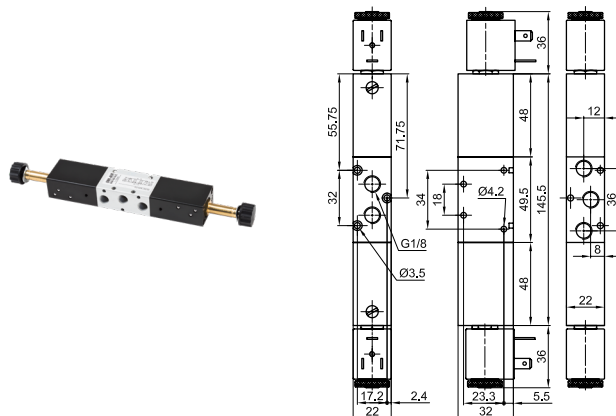
\*\*Magneti in konektorji glej strani 91, 92 / Solenoid Coils and Connectors, see pages 91, 92

**MM5218**

**5/2 ventil, elektro krmiljen z obeh strani (z ročnim vklopom)**  
**5/2 solenoid Valve, Double side activated (Manual turn on)**

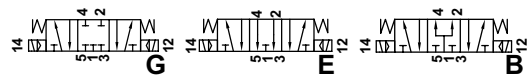
Temperatura / Temperature	max. +60 °C
Tlak / Pressure	1–10 bar
Pretok / Flow (5 bar)	550 l/min
Navoj / Thread	G 1/8


**MM5218P**

**5/2 ventil, elektro krmiljen z obeh strani, dodatno napajanje (z ročnim vklopom)**  
**5/2 solenoid Valve, External air supply (Manual turn on)**

Temperatura / Temperature	max. +60 °C
Tlak / Pressure	0,95-10 bar
Pretok / Flow (5 bar)	550 l/min
Navoj / Thread	G 1/8


**MM5318 G / E / B**

**5/3 ventil, elektro krmiljen (z ročnim vklopom)**  
**5/3 solenoid valve (Manual turn on)**

Temperatura / Temperature	max. +60 °C
Tlak / Pressure	1–10 bar
Pretok / Flow (5 bar)	550 l/min
Navoj / Thread	G 1/8


**TEHNIČNI PODATKI ZA MM...18 / TECHNICAL DATA FOR MM...18**

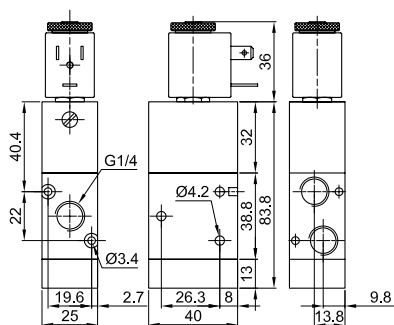
Medij / Fluid	Zrak, filtriran 40 µm, naoljen* ali nenaoljen Filtered Air 40µm, lubricated* or not	
Magneti in konektorji / Coils and connectors	MS22 + KON22**	
Material	Telo ventila / Body valve	Aluminij / Aluminium
	Tesnila / Seals	NBR
	Vzmet / Spring	INOX
	Vreteno / Spool	Aluminij / Aluminium
	Notranji del / Interior parts	Medenina / Brass

**i** Vsi ventili so mazani s trajnim mazivom. Mazanje pri filtriranem in sušenem zraku ni potrebno!  
 All valves are greased with permanent grease. Lubrication is not necessary when filtered, dry air is used!

\*Uporabljati samo olje ISO VG 32 klasa 1 / Use only ISO VG 32 Class 1 Lubricant

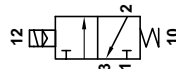
\*\*Magneti in konektorji glej strani 91, 92 / Solenoid Coils and Connectors, see pages 91, 92

## MV3214

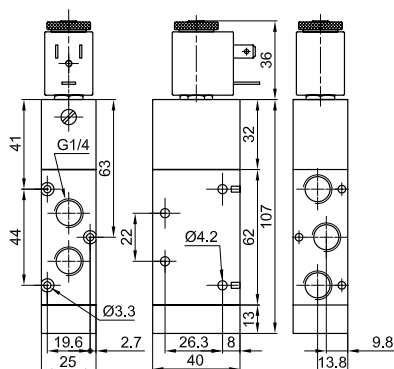


### 3/2 ventil, elektro krmiljen, normalno zaprt (z ročnim vklopom) 3/2 solenoid Valve, N.C. (Manual turn on)

Temperatura / Temperature	max. +60 °C
Tlak / Pressure	1,5–10 bar
Pretok / Flow (5 bar)	1000 l/min
Navoj / Thread	G 1/4

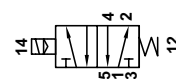


## MV5214

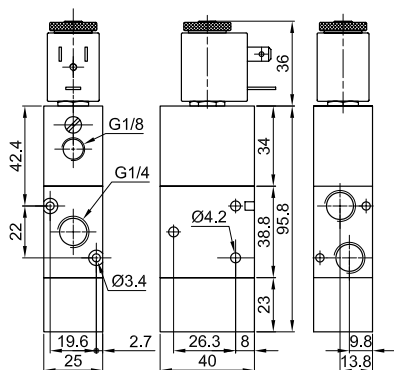


### 5/2 ventil, elektro krmiljen (z ročnim vklopom) 5/2 solenoid Valve (Manual turn on)

Temperatura / Temperature	max. +60 °C
Tlak / Pressure	1,5–10 bar
Pretok / Flow (5 bar)	1000 l/min
Navoj / Thread	G 1/4

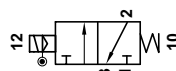


## MV3214P

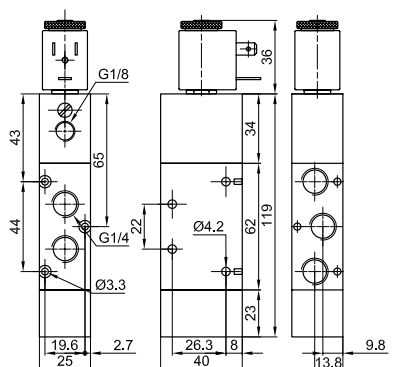


### 3/2 ventil, normalno zaprt, dodatno napajanje (z ročnim vklopom) 3/2 solenoid Valve, N.C., External Air Supply (Manual turn on)

Temperatura / Temperature	max. +60 °C
Tlak / Pressure	-0,95–10 bar
Pretok / Flow (5 bar)	1000 l/min
Navoj / Thread	G 1/4



## MV5214P



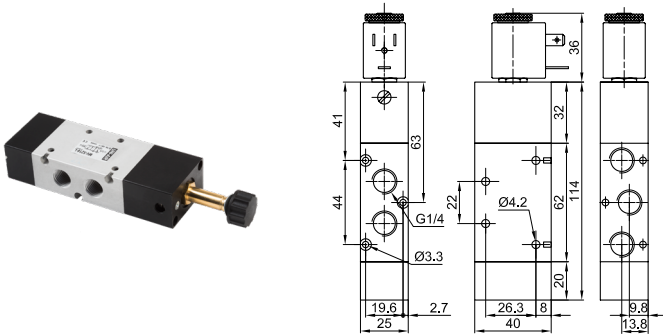
### 5/2 ventil, dodatno napajanje (z ročnim vklopom) 5/2 solenoid Valve, External air Supply (Manual turn on)

Temperatura / Temperature	max. +60 °C
Tlak / Pressure	-0,95–10 bar
Pretok / Flow (5 bar)	1000 l/min
Navoj / Thread	G 1/4



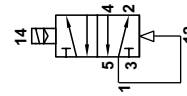
Vsi ventili so mazani s trajnim mazivom. Mazanje pri filtriranem in sušenem zraku ni potrebno!  
All valves are greased with permanent grease. Lubrication is not necessary when filtered, dry air is used!

### MV5214L

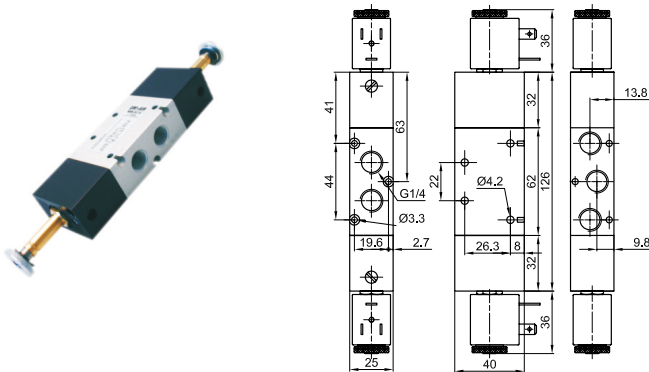


#### 5/2 ventil, elektro krmiljen, vrača ga zrak (z ročnim vklopom) 5/2 solenoid Valve, Air returned (Manual turn on)

Temperatura / Temperature	max. +60 °C
Tlak / Pressure	1,5–10 bar
Pretok / Flow (5 bar)	1000 l/min
Navoj / Thread	G 1/4

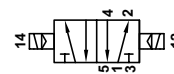


### MM5214

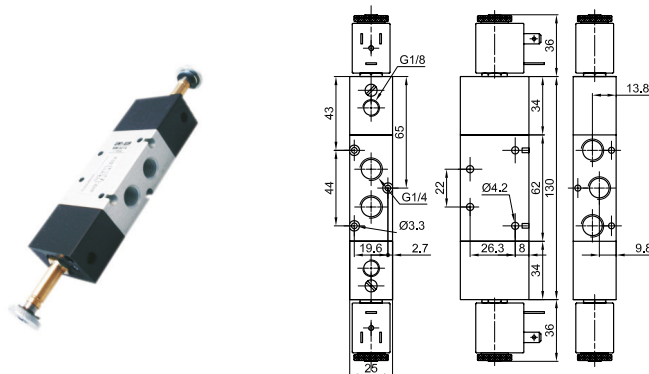


#### 5/2 ventil, elektro krmiljen z obeh strani (z ročnim vklopom) 5/2 solenoid Valve, Double side Activated (Manual turn on)

Temperatura / Temperature	max. +60 °C
Tlak / Pressure	1–10 bar
Pretok / Flow (5 bar)	1000 l/min
Navoj / Thread	G 1/4



### MM5214P

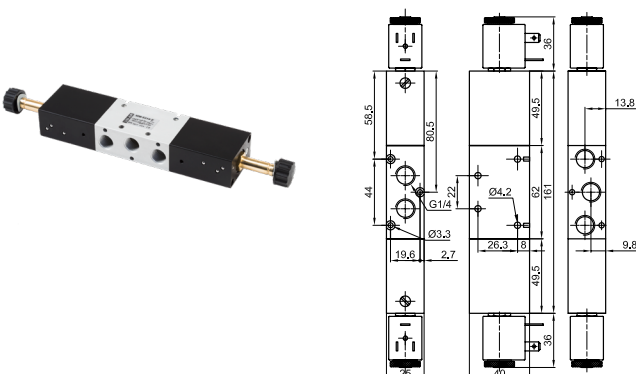


#### 5/2 ventil, elektro krmiljen in dodatno napajanje z obeh strani (z ročnim vklopom) 5/2 solenoid Valve, Double side Activated, Double Side External Air Supply (Manual turn on)

Temperatura / Temperature	max. +60 °C
Tlak / Pressure	0,95–10 bar
Pretok / Flow (5 bar)	1000 l/min
Navoj / Thread	G 1/4



### MM5314 G / E / B

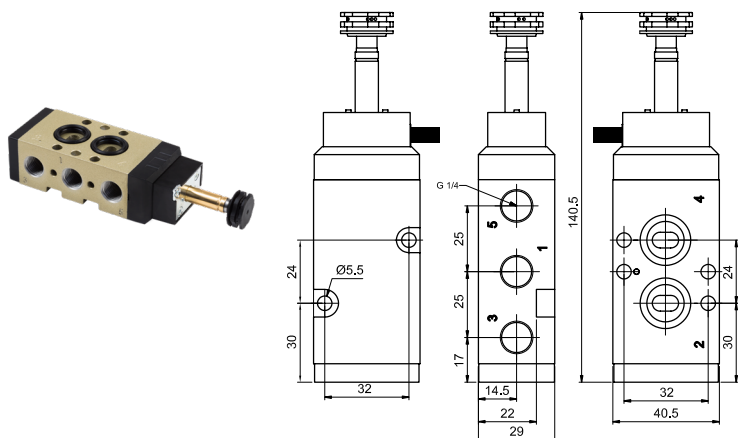


#### 5/3 ventil, elektro krmiljen (z ročnim vklopom) 5/3 solenoid Valve (Manual turn on)

Temperatura / Temperature	max. +60 °C
Tlak / Pressure	1–10 bar
Pretok / Flow (5 bar)	1000 l/min
Navoj / Thread	G 1/4

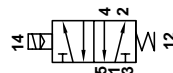


## YMV5214NAM



### 5/2 ventil, enostransko elektromagnetno krmiljen 5/2 position Solenoid Valve

Temperatura / Temperature	max. +60 °C
Tlak / Pressure	1,5–10 bar
Pretok / Flow (5 bar)	1000 l/min
Navoj / Thread	G 1/4



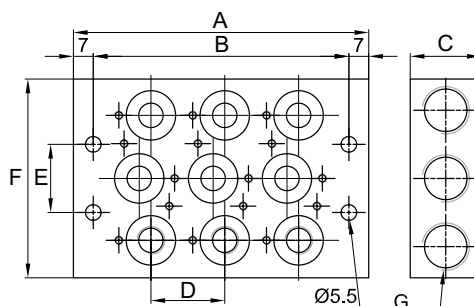
**i** Uporabljati samo olje ISO VG 32 klasa 1  
Use only ISO VG 32 Class 1 Lubricant

**i** Magneti in konektorji glej stran 91, 92.  
Solenoid Coils and connectors, see page 91, 92.

## Priključne plošče za MV / Manifold blocks for MV

### P1/8 2 / 3 / 4 / 5 / 6 / 8 / 10, P1/4 2 / 3 / 4 / 5 / 6 / 8 / 10

#### Priključna plošča za ventile 3/2, 5/2, 5/3 Mainfold Block for Valves 3/2, 5/2, 5/3



#### PP 1/4



#### Zaporna plošča Blank plate

#### PP 1/8



#### Zaporna plošča Blank plate

Tip Type	Ventili Valves	G	A	B	C	D	E	F
P1/82	2	1/4	72	58	20	24	20,5	60
P1/83	3	1/4	96	82	20	24	20,5	60
P1/84	4	1/4	120	106	20	24	20,5	60
P1/85	5	1/4	144	130	20	24	20,5	60
P1/86	6	1/4	168	154	20	24	20,5	60
P1/88	8	1/4	216	202	20	24	20,5	60
P1/810	10	1/4	264	250	20	24	20,5	60
P1/42	2	3/8	78	64	25	26	24	70
P1/43	3	3/8	104	90	25	26	24	70
P1/44	4	3/8	130	116	25	26	24	70
P1/45	5	3/8	156	142	25	26	24	70
P1/46	6	3/8	182	168	25	26	24	70
P1/48	8	3/8	234	220	25	26	24	70