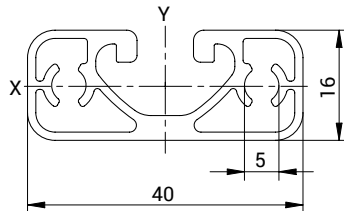
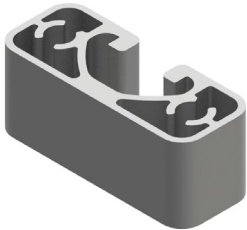


U8 – RASTER 40

PROFIL ALU 16x40 L – U8



KAPA / CAP: 43825

KODA NAROČANJA: **P1640LLU8** / /
ORDER CODE:

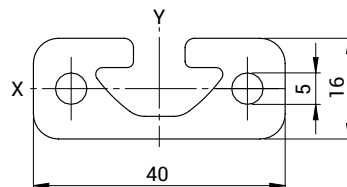
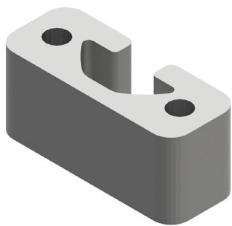
Konstruktivski podatki
Construction specifications:

Material = Al Mg Si 0,5 F25
m = 0,69 kg/m
A = 2,45 cm²
I_x = 0,69 cm⁴
W_x = 0,84 cm³
I_y = 3,71 cm⁴
W_y = 1,86 cm³

Primeri obdelav na strani 8.
Machining examples on page 8.

	F _{max} (N)		
	12000	-	17000

PROFIL ALU 16x40 S – U8



KAPA / CAP: 43825

KODA NAROČANJA: **P1640SU8** / /
ORDER CODE:

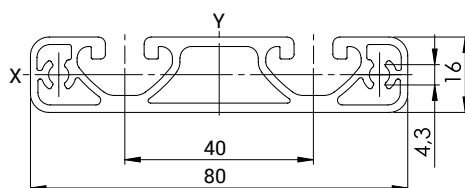
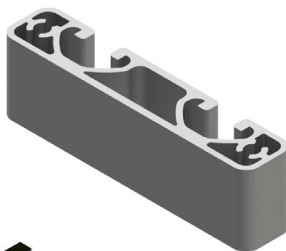
Konstruktivski podatki
Construction specifications:

Material = Al Mg Si 0,5 F25
m = 1,16 kg/m
A = 4,28 cm²
I_x = 1,09 cm⁴
W_x = 1,27 cm³
I_y = 6,95 cm⁴
W_y = 3,47 cm³

Primeri obdelav na strani 8.
Machining examples on page 8.

	F _{max} (N)		
	12000	-	17000

PROFIL ALU 16x80 L U8



KAPA / CAP: 43826

KODA NAROČANJA: **P1680LLU8** / /
ORDER CODE:

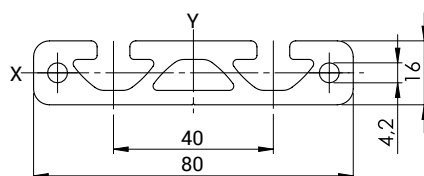
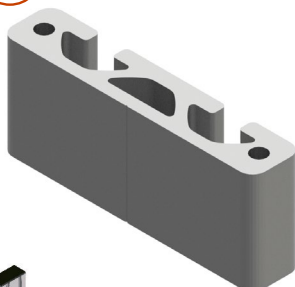
Konstruktivski podatki
Construction specifications:

Material = Al Mg Si 0,5 F25
m = 1,34 kg/m
A = 4,98 cm²
I_x = 1,57 cm⁴
W_x = 1,89 cm³
I_y = 31,32 cm⁴
W_y = 7,83 cm³

Primeri obdelav na strani 8.
Machining examples on page 8.

	F _{max} (N)		
	12000	-	17000

PROFIL ALU 16x80 S – U8



KAPA / CAP: 43826

KODA NAROČANJA: **P1680SU8** / /
ORDER CODE:

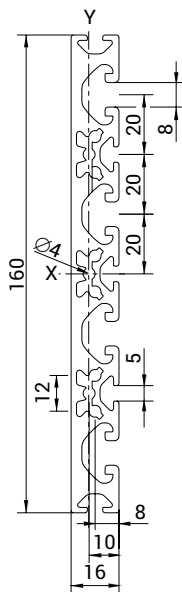
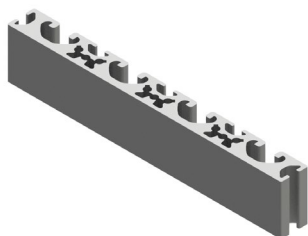
Konstruktivski podatki
Construction specifications:

Material = Al Mg Si 0,5 F25
m = 2,16 kg/m
A = 8,01 cm²
I_x = 2,20 cm⁴
W_x = 2,62 cm³
I_y = 49,34 cm⁴
W_y = 12,34 cm³

Primeri obdelav na strani 8.
Machining examples on page 8.

	F _{max} (N)		
	12000	-	17000

PROFIL ALU 16x160 – U8 /U5



KODA NAROČANJA: P16160U8U5 / _ / _
ORDER CODE:

Konstruktivski podatki
 Construction specifications:

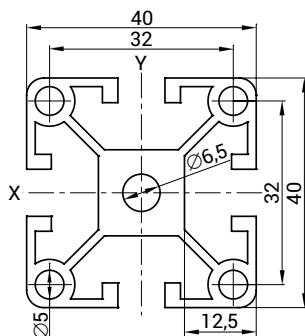
Material = Al Mg Si 0,5 F25
 m = 3,70 kg/m
 A = 13,69 cm²
 I_x = 304,40 cm⁴
 W_x = 38,05 cm³
 I_y = 3,76 cm⁴
 W_y = 4,19 cm³

Primeri obdelav na strani 8.
 Machining examples on page 8.

	12000	-	17000

KAPA / CAP: 43827

PROFIL ALU 40x40 L – U8



KODA NAROČANJA: P4040LU8 / _ / _
ORDER CODE:

Konstruktivski podatki
 Construction specifications:

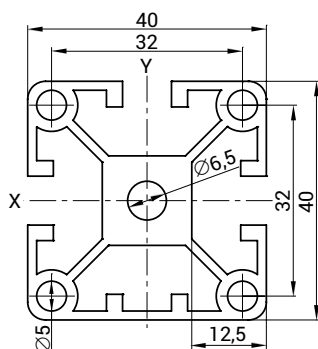
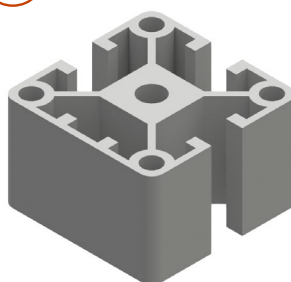
Material = Al Mg Si 0,5 F25
 m = 1,39 kg/m
 A = 5,14 cm²
 I_x = 8,33 cm⁴
 W_x = 4,16 cm³
 I_y = 8,33 cm⁴
 W_y = 4,16 cm³

Primeri obdelav na strani 8.
 Machining examples on page 8.

	7000	-	12000

KAPA / CAP: 5599

PROFIL ALU 40x40 L 1N – U8



KODA NAROČANJA: P4040L1NU8 / _ / _
ORDER CODE:

Konstruktivski podatki
 Construction specifications:

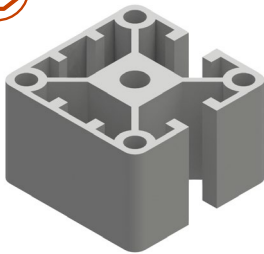
Material = Al Mg Si 0,5 F25
 m = 1,42 kg/m
 A = 5,25 cm²
 I_x = 8,70 cm⁴
 W_x = 4,35 cm³
 I_y = 8,33 cm⁴
 W_y = 4,16 cm³

Primeri obdelav na strani 8.
 Machining examples on page 8.

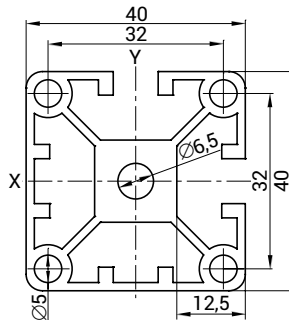
	7000	-	12000

KAPA / CAP: 5599

PROFIL ALU 40x40 L 2N90 – U8



KAPA / CAP: 5599



KODA NAROČANJA: P4040L2N90U8 /

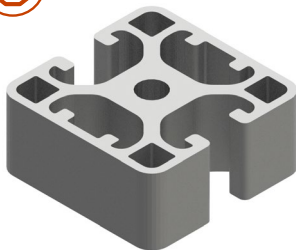
Konstruktivski podatki
Construction specifications:

Material = Al Mg Si 0,5 F25
m = 1,45 kg/m
A = 5,35 cm²
I_x = 8,70 cm⁴
W_x = 4,35 cm³
I_y = 8,70 cm⁴
W_y = 4,35 cm³

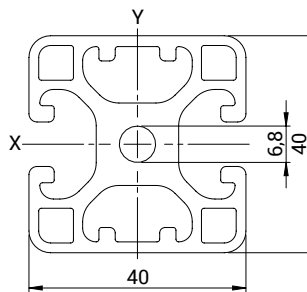
Primeri obdelav na strani 8.
Machining examples on page 8.

	F _{max} (N)		
	7000	-	12000

PROFIL ALU 40x40 L 2N180 – U8



KAPA / CAP: 5599



KODA NAROČANJA: P4040L2NU8 /

Konstruktivski podatki
Construction specifications:

Material = Al Mg Si 0,5 F25
m = 1,84 kg/m
A = 6,83 cm²
I_x = 9,20 cm⁴
W_x = 4,60 cm³
I_y = 10,45 cm⁴
W_y = 5,22 cm³

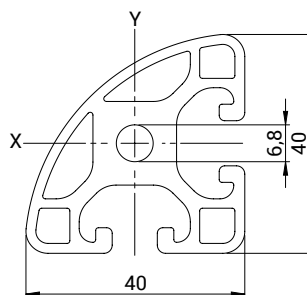
Primeri obdelav na strani 8.
Machining examples on page 8.

	F _{max} (N)		
	7000	-	12000

PROFIL ALU POLKROŽNI 40x40 LR90 – U8



KAPA / CAP: 35035



KODA NAROČANJA: P40LR90U8 /

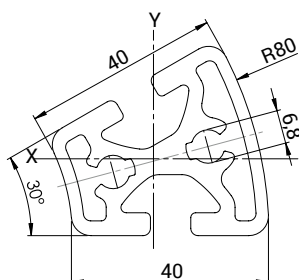
Konstruktivski podatki
Construction specifications:

Material = Al Mg Si 0,5 F25
m = 1,52 kg/m
A = 5,64 cm²
I_x = 6,63 cm⁴
W_x = 3,02 cm³
I_y = 6,63 cm⁴
W_y = 3,02 cm³

Primeri obdelav na strani 8.
Machining examples on page 8.

	F _{max} (N)		
	7000	-	12000

PROFIL ALU POLKROŽNI 40 R80 30° – U8



KODA NAROČANJA: P40R30U8 /

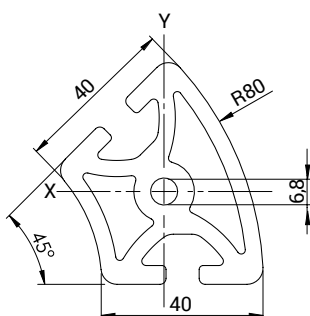
Konstruktivski podatki
Construction specifications:

Material = Al Mg Si 0,5 F25
m = 1,68 kg/m
A = 6,22 cm²
I_x = 6,56 cm⁴
W_x = 2,91 cm³
I_y = 8,99 cm⁴
W_y = 3,83 cm³

Primeri obdelav na strani 8.
Machining examples on page 8.

	F _{max} (N)		
	14000	-	19000

PROFIL ALU POLKROŽNI 40 R80 45° – U8



KODA NAROČANJA: **P40R45U8** /

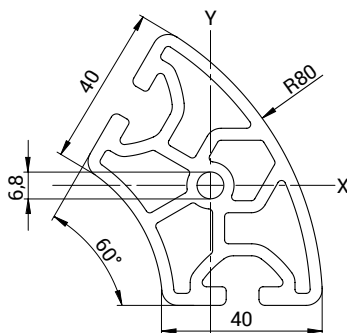
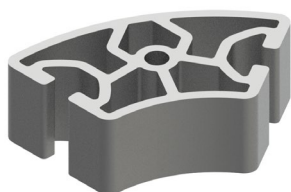
Konstruktivski podatki
 Construction specifications:

Material = Al Mg Si 0,5 F25
 m = 2,77 kg/m
 A = 10,27 cm²
 I_x = 22,42 cm⁴
 W_x = 7,08 cm³
 I_y = 16,68 cm⁴
 W_y = 6,38 cm³

Primeri obdelav na strani 8.
 Machining examples on page 8.

	F _{max} (N)		
	14000	-	19000

PROFIL ALU POLKROŽNI 40 R80 60° – U8



KODA NAROČANJA: **P40R60U8** /

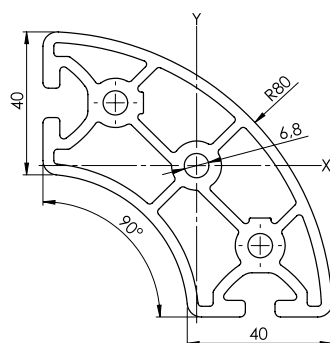
Konstruktivski podatki
 Construction specifications:

Material = Al Mg Si 0,5 F25
 m = 2,86 kg/m
 A = 10,61 cm²
 I_x = 35,44 cm⁴
 W_x = 9,33 cm³
 I_y = 22,89 cm⁴
 W_y = 7,59 cm³

Primeri obdelav na strani 8.
 Machining examples on page 8.

	F _{max} (N)		
	14000	-	19000

PROFIL ALU POLKROŽNI 40 R80 90° – U8



KODA NAROČANJA: **P40R90U8** /

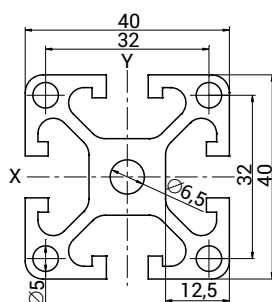
Konstruktivski podatki
 Construction specifications:

Material = Al Mg Si 0,5 F25
 m = 3,94 kg/m
 A = 14,6 cm²
 I_x = 75,99 cm⁴
 W_x = 18,78 cm³
 I_y = 75,99 cm⁴
 W_y = 18,78 cm³

Primeri obdelav na strani 8.
 Machining examples on page 8.

	F _{max} (N)		
	14000	-	19000

PROFIL ALU 40x40 N – U8



KODA NAROČANJA: **P4040NU8** /

Konstruktivski podatki
 Construction specifications:

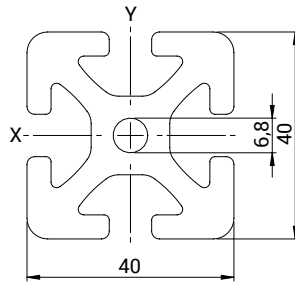
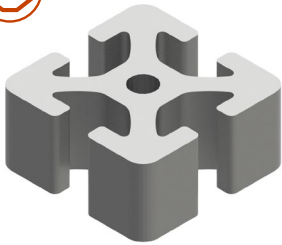
Material = Al Mg Si 0,5 F25
 m = 1,67 kg/m
 A = 6,17 cm²
 I_x = 9,45 cm⁴
 W_x = 4,72 cm³
 I_y = 9,75 cm⁴
 W_y = 4,72 cm³

Primeri obdelav na strani 8.
 Machining examples on page 8.

	F _{max} (N)		
	10000	-	16000

KAPA / CAP: 5599

PROFIL ALU 40x40 S – U8



KAPA / CAP: 5599

KODA NAROČANJA: **P4040SU8** / /

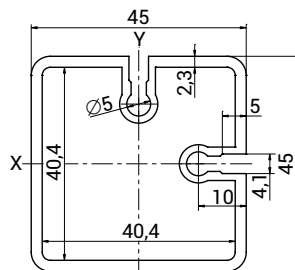
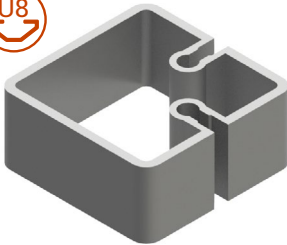
Konstruktivski podatki
Construction specifications:

Material = Al Mg Si 0,5 F25
m = 9,14 kg/m
A = 9,15 cm²
I_x = 14,14 cm⁴
W_x = 7,07 cm³
I_y = 14,14 cm⁴
W_y = 7,07 cm³

Primeri obdelav na strani 8.
Machining examples on page 8.

	F _{max} (N)		
	14000	-	19000

PROFIL TELESKOPSKI ZA PROFIL 40x40 – U8

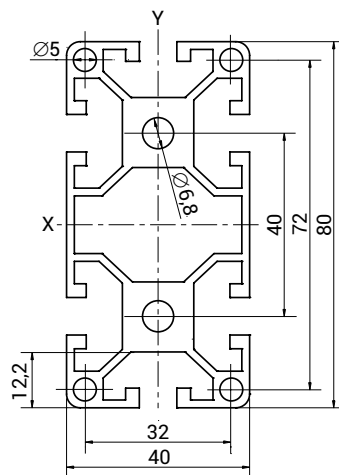
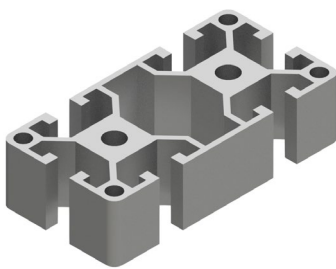


KODA NAROČANJA: **PT40** / /

Konstruktivski podatki
Construction specifications:

Material = Al Mg Si 0,5 F25
m = 1,20 kg/m
A = 4,47 cm²
I_x = 11,80 cm⁴
W_x = 5,24 cm³
I_y = 11,80 cm⁴
W_y = 5,24 cm³

KODA NAROČANJA: **P4080LU8** / /



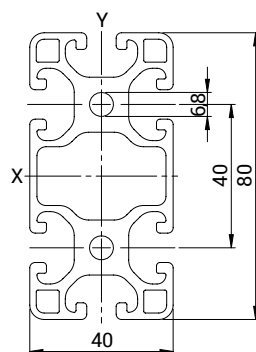
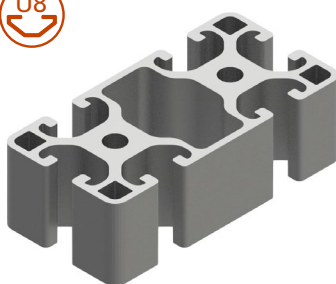
Konstruktivski podatki
Construction specifications:

Material = Al Mg Si 0,5 F25
m = 2,51 kg/m
A = 9,29 cm²
I_x = 59,37 cm⁴
W_x = 14,84 cm³
I_y = 16,10 cm⁴
W_y = 8,05 cm³

Primeri obdelav na strani 8.
Machining examples on page 8.

	F _{max} (N)		
	7000	-	12000

PROFIL ALU 40x80 N – U8



KODA NAROČANJA: **P4080NU8** / /

Konstruktivski podatki
Construction specifications:

Material = Al Mg Si 0,5 F25
m = 3,05 kg/m
A = 11,31 cm²
I_x = 70,07 cm⁴
W_x = 17,52 cm³
I_y = 16,93 cm⁴
W_y = 8,47 cm³

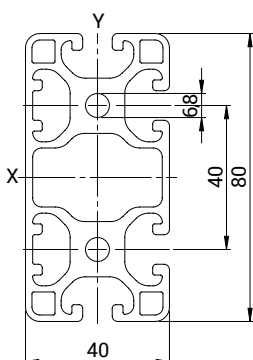
Primeri obdelav na strani 8.
Machining examples on page 8.

	F _{max} (N)		
	10000	-	16000

PROFIL ALU 40x80 N 2N – U8



 KAPA / CAP: 5600


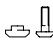




KODA NAROČANJA: **P4080N2NU8** /

Konstruktivski podatki
 Construction specifications:

Material = Al Mg Si 0,5 F25
 m = 3,15 kg/m
 A = 11,66 cm²
 I_x = 71,49 cm⁴
 W_x = 17,87 cm³
 I_y = 18,16 cm⁴
 W_y = 8,83 cm³

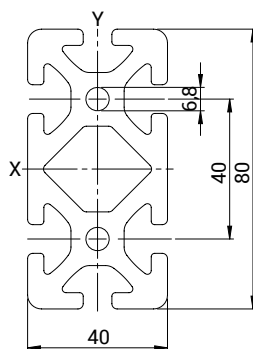
Primeri obdelav na strani 8.
 Machining examples on page 8.

			
	10000	-	16000

PROFIL ALU 40x80 S – U8



 KAPA / CAP: 5600


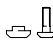




KODA NAROČANJA: **P4080SU8** /

Konstruktivski podatki
 Construction specifications:

Material = Al Mg Si 0,5 F25
 m = 4,52 kg/m
 A = 16,74 cm²
 I_x = 101,41 cm⁴
 W_x = 25,35 cm³
 I_y = 27,21 cm⁴
 W_y = 13,61 cm³

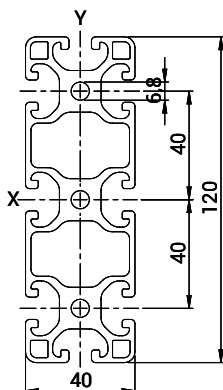
Primeri obdelav na strani 9.
 Machining examples on page 9.

			
	14000	-	19000

PROFIL ALU 40x120 N – U8



 KAPA / CAP: 5765







KODA NAROČANJA: **P40120NU8** /

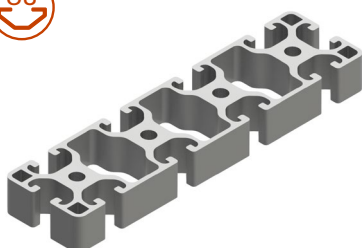
Konstruktivski podatki
 Construction specifications:

Material = Al Mg Si 0,5 F25
 m = 4,36 kg/m
 A = 16,14 cm²
 I_x = 221,43 cm⁴
 W_x = 36,91 cm³
 I_y = 24,49 cm⁴
 W_y = 12,34 cm³

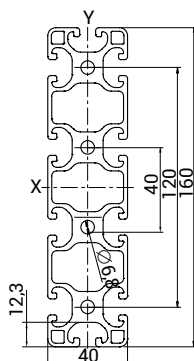
Primeri obdelav na strani 9.
 Machining examples on page 9.

			
	10000	-	16000

PROFIL ALU 40x160 N – U8



 KAPA / CAP: 2 x 5600







KODA NAROČANJA: **P40160SU8** /

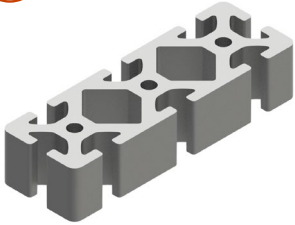
Konstruktivski podatki
 Construction specifications:

Material = Al Mg Si 0,5 F25
 m = 5,66 kg/m
 A = 20,97 cm²
 I_x = 501,91 cm⁴
 W_x = 62,74 cm³
 I_y = 32,44 cm⁴
 W_y = 16,22 cm³

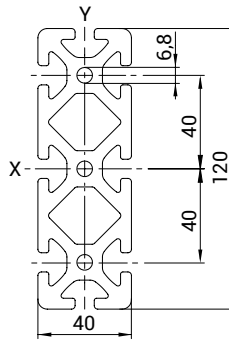
Primeri obdelav na strani 9.
 Machining examples on page 9.

			
	10000	-	16000

PROFIL ALU 40x120 S – U8



KAPA / CAP: 5765



KODA NAROČANJA: **P40120SU8** _ _ / _
ORDER CODE:

Konstruktivski podatki
Construction specifications:

Material = Al Mg Si 0,5 F25
m = 6,57 kg/m
A = 24,33 cm²
I_x = 322,57 cm⁴
W_x = 53,76 cm³
I_y = 40,28 cm⁴
W_y = 20,41 cm³

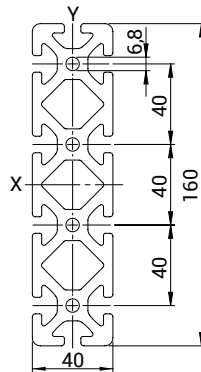
Primeri obdelav na strani 9.
Machining examples on page 9.

	F _{max} (N)		
	12000	-	17000

PROFIL ALU 40x160 S – U8



KAPA / CAP: 2 x 5600



KODA NAROČANJA: **P40160SU8** _ _ / _
ORDER CODE:

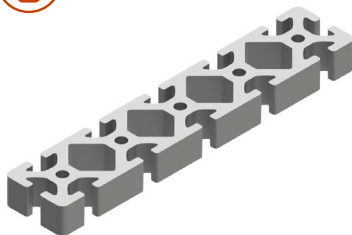
Konstruktivski podatki
Construction specifications:

Material = Al Mg Si 0,5 F25
m = 8,62 kg/m
A = 31,93 cm²
I_x = 738,38 cm⁴
W_x = 92,30 cm³
I_y = 53,34 cm⁴
W_y = 16,67 cm³

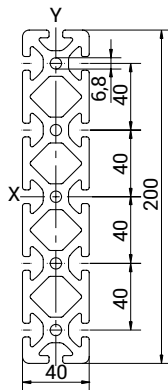
Primeri obdelav na strani 9.
Machining examples on page 9.

	F _{max} (N)		
	12000	-	17000

PROFIL ALU 40x200 S – U8



KAPA / CAP: 2 x 5600 + 1 x 5599



KODA NAROČANJA: **P40200SU8** _ _ / _
ORDER CODE:

Konstruktivski podatki
Construction specifications:

Material = Al Mg Si 0,5 F25
m = 10,66 kg/m
A = 39,50 cm²
I_x = 1409,02 cm⁴
W_x = 140,90 cm³
I_y = 66,39 cm⁴
W_y = 33,19 cm³

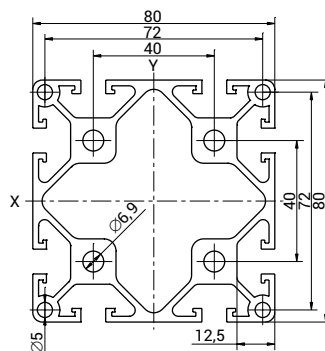
Primeri obdelav na strani 9.
Machining examples on page 9.

	F _{max} (N)		
	12000	-	17000

PROFIL ALU 80x80 L – U8



KAPA / CAP: 5601



KODA NAROČANJA: **P8080LU8** _ _ / _
ORDER CODE:

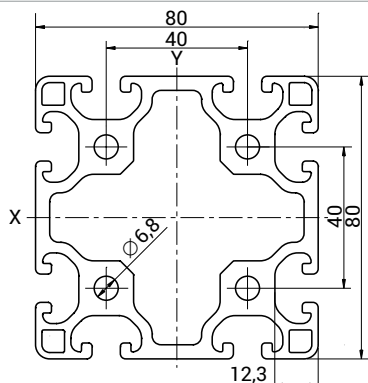
Konstruktivski podatki
Construction specifications:

Material = Al Mg Si 0,5 F25
m = 4,23 kg/m
A = 15,99 cm²
I_x = 109,32 cm⁴
W_x = 2,73 cm³
I_y = 109,32 cm⁴
W_y = 2,73 cm³

Primeri obdelav na strani 9.
Machining examples on page 9.

	F _{max} (N)		
	7000	-	12000

PROFIL ALU 80x80 N – U8



KODA NAROČANJA: **P8080NU8** /

Konstrukcijski podatki
 Construction specifications:

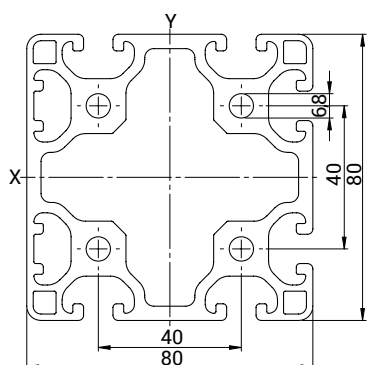
Material = Al Mg Si 0,5 F25
 m = 5,33 kg/m
 A = 19,75 cm²
 I_x = 134,90 cm⁴
 W_x = 33,72 cm³
 I_y = 134,90 cm⁴
 W_y = 33,72 cm³

Primeri obdelav na strani 9.
 Machining examples on page 9.

	10000	-	16000

KAPA / CAP: 5601

PROFIL ALU 80x80 N 2N – U8



KODA NAROČANJA: **P8080N2NU8** /

Konstrukcijski podatki
 Construction specifications:

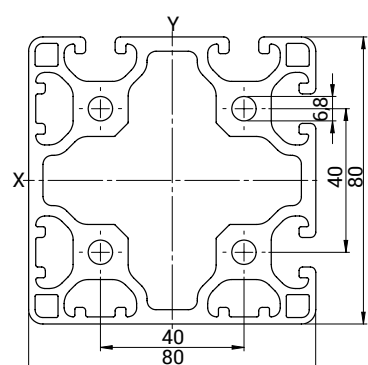
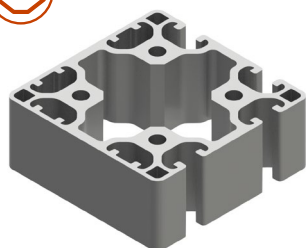
Material = Al Mg Si 0,5 F25
 m = 5,42 kg/m
 A = 20,1 cm²
 I_x = 136,31 cm⁴
 W_x = 34,07 cm³
 I_y = 140,12 cm⁴
 W_y = 34,44 cm³

Primeri obdelav na strani 9.
 Machining examples on page 9.

	7000	-	12000

KAPA / CAP: 5601

PROFIL ALU 80x80 N 4N90 – U8



KODA NAROČANJA: **P8080N4N90U8** /

Konstrukcijski podatki
 Construction specifications:

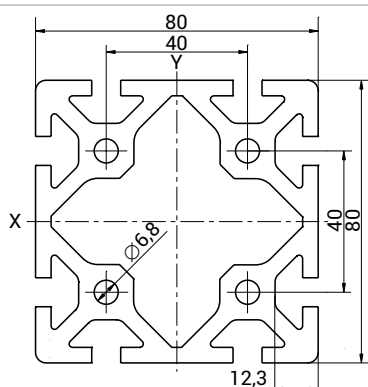
Material = Al Mg Si 0,5 F25
 m = 5,52 kg/m
 A = 20,45 cm²
 I_x = 141,55 cm⁴
 W_x = 34,80 cm³
 I_y = 141,55 cm⁴
 W_y = 34,80 cm³

Primeri obdelav na strani 9.
 Machining examples on page 9.

	7000	-	12000

KAPA / CAP: 5601

PROFIL ALU 80x80 S – U8



KODA NAROČANJA: **P8080SU8** /

Konstrukcijski podatki
 Construction specifications:

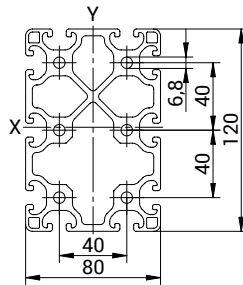
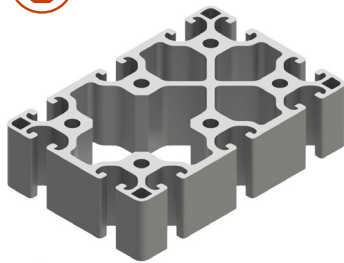
Material = Al Mg Si 0,5 F25
 m = 6,70 kg/m
 A = 24,74 cm²
 I_x = 179,62 cm⁴
 W_x = 44,90 cm³
 I_y = 179,62 cm⁴
 W_y = 44,90 cm³

Primeri obdelav na strani 9.
 Machining examples on page 9.

	12000	-	17000

KAPA / CAP: 5601

PROFIL ALU 80x120 N – U8



KAPA / CAP: 1 x 5601 + 1 x 5600

KODA NAROČANJA: **P80120NU8** /

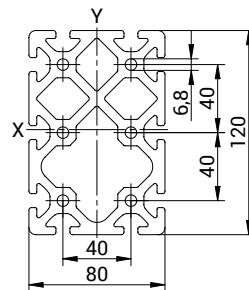
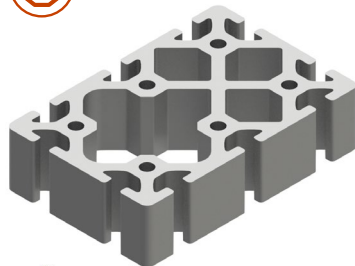
Konstruktivski podatki
Construction specifications:

Material = Al Mg Si 0,5 F25
m = 8,12 kg/m
A = 30,08 cm²
I_x = 422,46 cm⁴
W_x = 68,44 cm³
I_y = 202,75 cm⁴
W_y = 50,69 cm³

Primeri obdelav na strani 9.
Machining examples on page 9.

	F _{max} (N)		
	10000	-	16000

PROFIL ALU 80x120 S – U8



KAPA / CAP: 1 x 5601 + 1 x 5600

KODA NAROČANJA: **P80120SU8** /

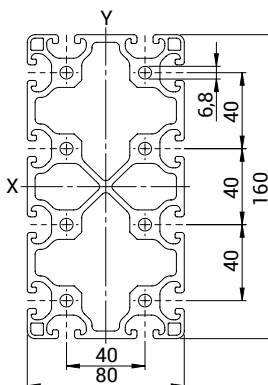
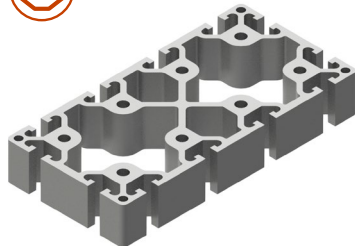
Konstruktivski podatki
Construction specifications:

Material = Al Mg Si 0,5 F25
m = 10,76 kg/m
A = 39,86 cm²
I_x = 574,22 cm⁴
W_x = 92,99 cm³
I_y = 274,63 cm⁴
W_y = 68,66 cm³

Primeri obdelav na strani 9.
Machining examples on page 9.

	F _{max} (N)		
	10000	-	16000

PROFIL ALU 80x160 N – U8



KAPA / CAP: 2 x 5601

KODA NAROČANJA: **P80160NU8** /

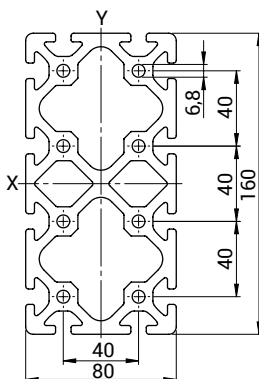
Konstruktivski podatki
Construction specifications:

Material = Al Mg Si 0,5 F25
m = 10,06 kg/m
A = 37,24 cm²
I_x = 902,06 cm⁴
W_x = 112,76 cm³
I_y = 265,74 cm⁴
W_y = 66,44 cm³

Primeri obdelav na strani 9.
Machining examples on page 9.

	F _{max} (N)		
	10000	-	16000

PROFIL ALU 80x160 S – U8



KAPA / CAP: 2 x 5601

KODA NAROČANJA: **P80160SU8** /

Konstruktivski podatki
Construction specifications:

Material = Al Mg Si 0,5 F25
m = 13,46 kg/m
A = 49,85 cm²
I_x = 1226,29 cm⁴
W_x = 153,28 cm³
I_y = 362,26 cm⁴
W_y = 90,56 cm³

Primeri obdelav na strani 9.
Machining examples on page 9.

	F _{max} (N)		
	12000	-	17000