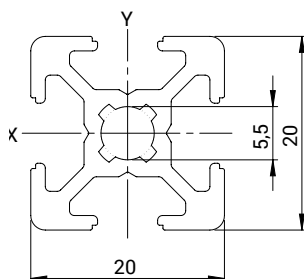
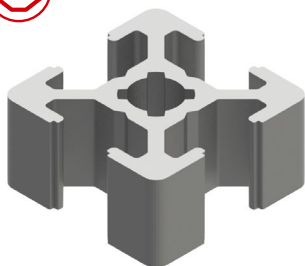


## U6 – RASTER 20

### PROFIL ALU 20x20 – U6



KAPA / CAP: 76346

KODA NAROČANJA: **P2020U6** / \_ / \_  
 ORDER CODE:

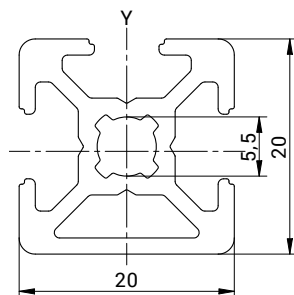
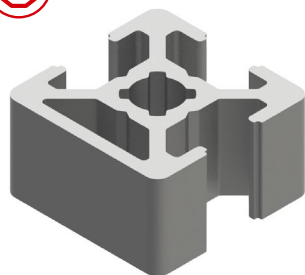
Konstruktivski podatki  
 Construction specifications:

Material = Al Mg Si 0,5 F25  
 $m = 0,44 \text{ kg/m}$   
 $A = 1,63 \text{ cm}^2$   
 $I_x = 0,68 \text{ cm}^4$   
 $W_x = 0,68 \text{ cm}^3$   
 $I_y = 0,68 \text{ cm}^4$   
 $W_y = 0,68 \text{ cm}^3$

Primeri obdelav na strani 8.  
 Machining examples on page 8.

	-	1000	2300

### PROFIL ALU 20x20 1N – U6



KAPA / CAP: 76346

KODA NAROČANJA: **P20201NU6** / \_ / \_  
 ORDER CODE:

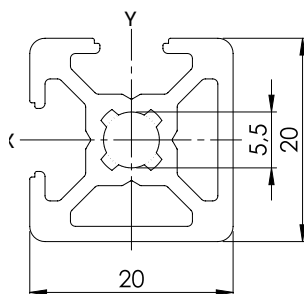
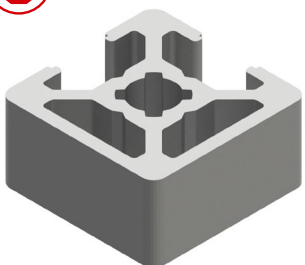
Konstruktivski podatki  
 Construction specifications:

Material = Al Mg Si 0,5 F25  
 $m = 0,46 \text{ kg/m}$   
 $A = 1,72 \text{ cm}^2$   
 $I_x = 0,75 \text{ cm}^4$   
 $W_x = 0,71 \text{ cm}^3$   
 $I_y = 0,67 \text{ cm}^4$   
 $W_y = 0,67 \text{ cm}^3$

Primeri obdelav na strani 8.  
 Machining examples on page 8.

	-	1000	2300

### PROFIL ALU 20x20 2N90 – U6



KAPA / CAP: 76346

KODA NAROČANJA: **P20202N90U6** / \_ / \_  
 ORDER CODE:

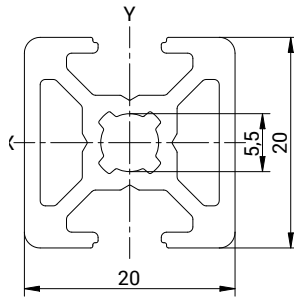
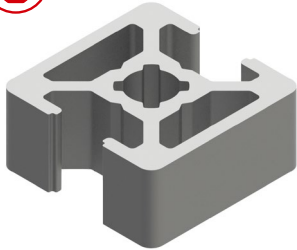
Konstruktivski podatki  
 Construction specifications:

Material = Al Mg Si 0,5 F25  
 $m = 0,49 \text{ kg/m}$   
 $A = 1,82 \text{ cm}^2$   
 $I_x = 0,76 \text{ cm}^4$   
 $W_x = 0,72 \text{ cm}^3$   
 $I_y = 0,76 \text{ cm}^4$   
 $W_y = 0,72 \text{ cm}^3$

Primeri obdelav na strani 8.  
 Machining examples on page 8.

	-	1000	2300

**PROFIL ALU 20x20 2N180 – U6**



KAPA / CAP: 76346

**KODA NAROČANJA:** P20202N180U6 / \_ / \_  
**ORDER CODE:**

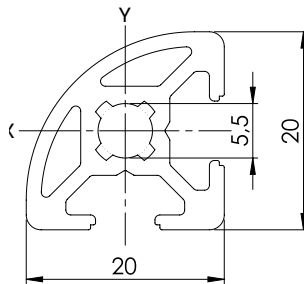
**Konstruktivski podatki**  
Construction specifications:

Material = Al Mg Si 0,5 F25  
m = 0,49 kg/m  
A = 1,83 cm<sup>2</sup>  
I<sub>x</sub> = 0,68 cm<sup>4</sup>  
W<sub>x</sub> = 0,68 cm<sup>3</sup>  
I<sub>y</sub> = 0,84 cm<sup>4</sup>  
W<sub>y</sub> = 0,84 cm<sup>3</sup>

Primeri obdelav na strani 8.  
Machining examples on page 8.

	-	1000	2300

**PROFIL ALU POLKROŽNI 20 R90 – U6**



**KODA NAROČANJA:** P20R90U6 / \_ / \_  
**ORDER CODE:**

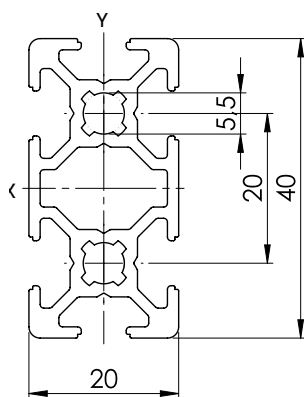
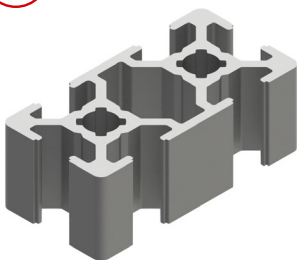
**Konstruktivski podatki**  
Construction specifications:

Material = Al Mg Si 0,5 F25  
m = 0,44 kg/m  
A = 1,62 cm<sup>2</sup>  
I<sub>x</sub> = 0,58 cm<sup>4</sup>  
W<sub>x</sub> = 0,55 cm<sup>3</sup>  
I<sub>y</sub> = 0,58 cm<sup>4</sup>  
W<sub>y</sub> = 0,55 cm<sup>3</sup>

Primeri obdelav na strani 8.  
Machining examples on page 8.

	-	1000	2300

**PROFIL 20x40 – U6**



**KODA NAROČANJA:** P2040U6 / \_ / \_  
**ORDER CODE:**

**Konstruktivski podatki**  
Construction specifications:

Material = Al Mg Si 0,5 F25  
m = 0,77 kg/m  
A = 2,87 cm<sup>2</sup>  
I<sub>x</sub> = 4,61 cm<sup>4</sup>  
W<sub>x</sub> = 2,31 cm<sup>3</sup>  
I<sub>y</sub> = 1,20 cm<sup>4</sup>  
W<sub>y</sub> = 1,20 cm<sup>3</sup>

Primeri obdelav na strani 8.  
Machining examples on page 8.

	-	1000	2300



KAPA / CAP: 2 x 76346