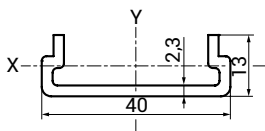
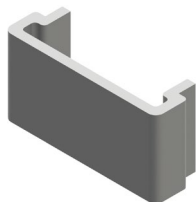


KANALI ZA KABLE / CABLE DUCTS

KANAL ZA KABEL 16x40 / CABLE DUCT 16x40

KODA NAROČANJA: **K1640** __ __ / __
ORDER CODE:



Konstrukcijski podatki
 Construction specifications:

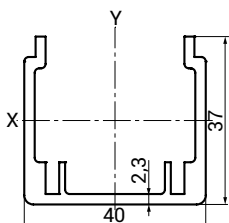
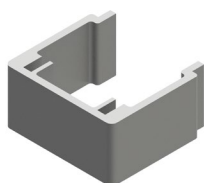
Material = Al Mg Si 0,5 F25
 $m = 0,28 \text{ kg/m}$
 $A = 1,04 \text{ cm}^2$
 $I_x = 0,15 \text{ cm}^4$
 $W_x = 0,16 \text{ cm}^3$
 $I_y = 2,18 \text{ cm}^4$
 $W_y = 1,09 \text{ cm}^3$



KAPA / CAP: 80972

KANAL ZA KABEL 40x40 / CABLE DUCT 40x40

KODA NAROČANJA: **K4040** __ __ / __
ORDER CODE:



Konstrukcijski podatki
 Construction specifications:

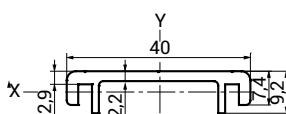
Material = Al Mg Si 0,5 F25
 $m = 0,62 \text{ kg/m}$
 $A = 2,28 \text{ cm}^2$
 $I_x = 3,13 \text{ cm}^4$
 $W_x = 1,24 \text{ cm}^3$
 $I_y = 5,93 \text{ cm}^4$
 $W_y = 2,97 \text{ cm}^3$



KAPA / CAP: 80974

POKROV KANALA 40 / CABLE DUCT COVER 40

KODA NAROČANJA: **PK40** __ __ / __
ORDER CODE:

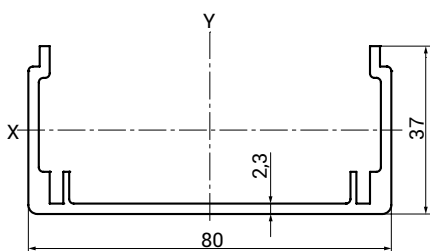
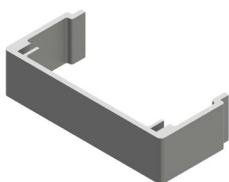


Konstrukcijski podatki
 Construction specifications:

Material = Al Mg Si 0,5 F25
 $m = 0,31 \text{ kg/m}$
 $A = 1,17 \text{ cm}^2$
 $I_x = 0,08 \text{ cm}^4$
 $W_x = 0,12 \text{ cm}^3$
 $I_y = 2,01 \text{ cm}^4$
 $W_y = 1,01 \text{ cm}^3$

KANAL ZA KABEL 40x80 / CABLE DUCT 40x80

KODA NAROČANJA: **K4080** __ __ / __
ORDER CODE:



Konstrukcijski podatki
 Construction specifications:

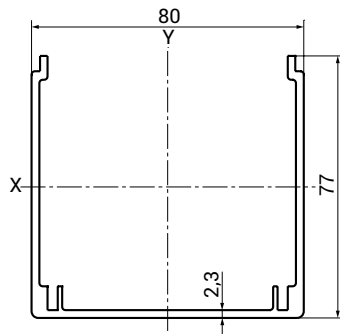
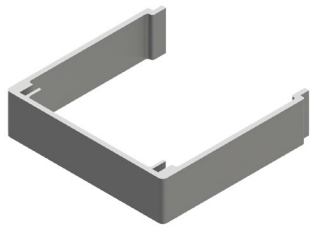
Material = Al Mg Si 0,5 F25
 $m = 0,78 \text{ kg/m}$
 $A = 2,87 \text{ cm}^2$
 $I_x = 3,74 \text{ cm}^4$
 $W_x = 1,36 \text{ cm}^3$
 $I_y = 29,82 \text{ cm}^4$
 $W_y = 7,46 \text{ cm}^3$



KAPA / CAP: 80975

KANAL ZA KABEL 80x80 / CABLE DUCT 80x80

KODA NAROČANJA: **K8080** __ / __
ORDER CODE:



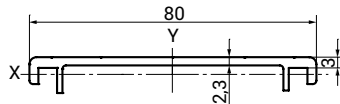
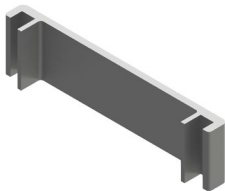
Konstrukcijski podatki
Construction specifications:

Material = Al Mg Si 0,5 F25
m = 1,66 kg/m
A = 6,14 cm²
Ix = 37,60 cm⁴
Wx = 7,17 cm³
Iy = 70,95 cm⁴
Wy = 17,74 cm³

KAPA / CAP: 80977

POKROV KANALA 80 / CABLE DUCT COVER 80

KODA NAROČANJA: **PK80** __ / __
ORDER CODE:

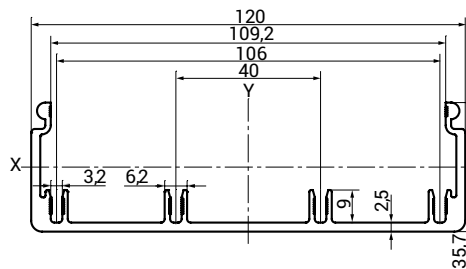
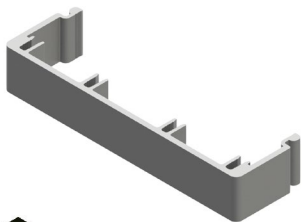


Konstrukcijski podatki
Construction specifications:

Material = Al Mg Si 0,5 F25
m = 0,64 kg/m
A = 2,37 cm²
Ix = 0,10 cm⁴
Wx = 0,14 cm³
Iy = 14,91 cm⁴
Wy = 3,73 cm³

KANAL ZA KABEL 40x120 / CABLE DUCT 40x120

KODA NAROČANJA: **K40120** __ / __
ORDER CODE:



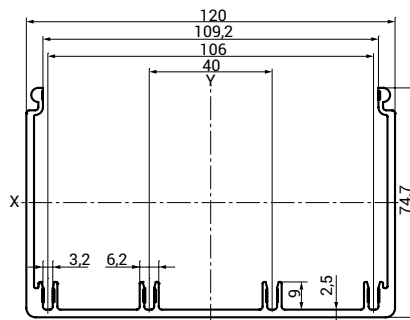
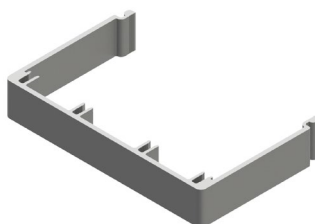
Konstrukcijski podatki
Construction specifications:

Material = Al Mg Si 0,5 F25
m = 1,60 kg/m
A = 5,91 cm²
Ix = 5,43 cm⁴
Wx = 2,72 cm³
Iy = 115,69 cm⁴
Wy = 19,28 cm³

KAPA / CAP: 80973

KANAL ZA KABEL 80x120 / CABLE DUCT 80x120

KODA NAROČANJA: **K80120** __ / __
ORDER CODE:



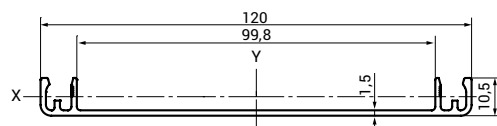
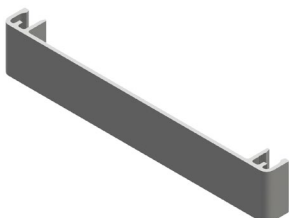
Konstrukcijski podatki
Construction specifications:

Material = Al Mg Si 0,5 F25
m = 2,12 kg/m
A = 7,83 cm²
Ix = 42,56 cm⁴
Wx = 10,64 cm³
Iy = 182,32 cm⁴
Wy = 30,39 cm³

KAPA / CAP: 80976

POKROV KANALA 120 / CABLE DUCT COVER 120

KODA NAROČANJA: **PK120** __ / __
ORDER CODE:



Konstrukcijski podatki
Construction specifications:

Material = Al Mg Si 0,5 F25
m = 0,66 kg/m
A = 2,42 cm²
Ix = 40,69 cm⁴
Wx = 6,78 cm³
Iy = 0,16 cm⁴
Wy = 0,10 cm³