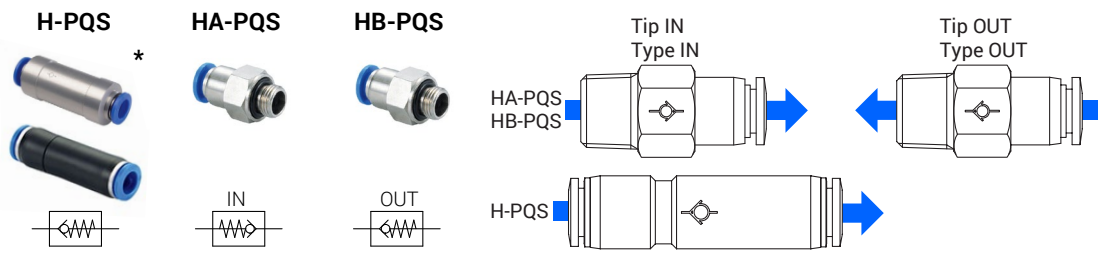


## Funkcijski priključki Function fittings

Priključki z nepovratnim ventilom / Fittings with check valve .....	15	Vrtljivi priključki / Rotation fittings .....	17
STOP priključki / STOP fittings .....	15	Regulatorji tlaka / Pressure regulators .....	17
Dušilni priključki / Speed controllers .....	16	Funkcijski elementi / Functional elements .....	18
Dušilni nepovratni priključek / Speed controllers with pilot check valve ..	17		

## PRIKLJUČKI Z NEPOVRATNIM VENTILOM / FITTINGS WITH CHECK VALVE



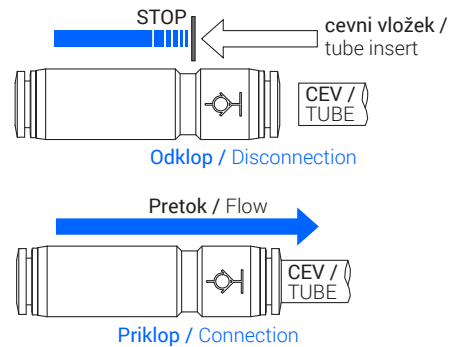
Navoj Thread [A]	Cev Tube D [mm]	Tip Type	Tip Type	Tip Type
	4/2,5	HPQS-4	/	/
	6/4	HPQS-6	/	/
	8/6	HPQS-8	/	/
	10/8	HPQS-10*	/	/
	12/10	HPQS-12*	/	/
G1/8	4/2,5	/	HAPQS-184	HBPQS-184
	6/4	/	HAPQS-186	HBPQS-186
	8/6	/	HAPQS-188	HBPQS-188
G1/4	6/4	/	HAPQS-146	HBPQS-146
	8/6	/	HAPQS-148	HBPQS-148
	10/8	/	HAPQS-3810	HBPQS-3810
	12/9-10	/	HAPQS-3812	HBPQS-3812
G1/2	10/8	/	HAPQS-1210	HBPQS-1210
	12/9-10	/	HAPQS-1212	HBPQS-1212

\* velikost Ø 10-12 z aluminijastim ohišjem / the large size Ø 10-12 is in aluminium body

## STOP PRIKLJUČKI / STOP FITTINGS



Navoj Thread [A]	Cev Tube D [mm]	Tip Type	Tip Type	Tip Type
	4/2,5	/	/	PQSK-40
	6/4	/	/	PQSK-60
	8/6	/	/	PQSK-80
	10/8	/	/	PQSK-100
	12/9-10	/	/	PQSK-120
G1/8	4/2,5	PQSK-184	PQSKL-184	/
	6/4	PQSK-186	PQSKL-186	/
G1/4	6/4	PQSK-146	PQSKL-146	/
	8/6	PQSK-148	PQSKL-148	/
	10/8	PQSK-1410	PQSKL-1410	/
	8/6	PQSK-388	PQSKL-388	/
G3/8	10/8	PQSK-3810	PQSKL-3810	/
	12/9-10	PQSK-3812	PQSKL-3812	/
G1/2	10/8	PQSK-1210	PQSKL-1210	/
	12/9-10	PQSK-1212	PQSKL-1212	/



## DUŠILNI PRIKLJUČKI / SPEED CONTROLLERS

**PGRLA**  
Za cilindar  
For cylinder



**PGRLZ**  
Za ventil  
For valve



**KGRLA-RSB**  
Za cilindar  
For cylinder



**KGRLZ-RSB**  
Za ventil  
For valve



**KGRLA**  
Za cilindar  
For cylinder



**CR-KGRLA**  
Za cilindar  
For cylinder



**KGRLZ**  
Za ventil  
For valve



**CR-KGRLZ**  
Za ventil  
For valve



Navoj Thread [A]	Cev Tube D [mm]	Tip Type	Tip Type	Tip Type	Tip Type	Tip Type	Tip Type	Tip Type	Tip Type
M5	3/2	PGRLA-M53	/	/	/	/	/	/	/
	4/2,5	PGRLA-M54	PGRLZ-M54	KGRLA-M54RSB	KGRLZ-M54RSB	KGRLA-M54	/	KGRLZ-M54	/
	6/4	PGRLA-M56	PGRLZ-M56	/	/	/	/	/	/
G1/8	4/2,5	PGRLA-184	PGRLZ-184	KGRLA-184RSB	KGRLZ-184RSB	KGRLA-184	CR-KGRLA-184	KGRLZ-184	CR-KGRLZ-184
	6/4	PGRLA-186	PGRLZ-186	KGRLA-186RSB	KGRLZ-186RSB	KGRLA-186	CR-KGRLA-186	KGRLZ-186	CR-KGRLZ-186
	8/6	PGRLA-188	PGRLZ-188	KGRLA-188RSB	KGRLZ-188RSB	KGRLA-188	CR-KGRLA-188	KGRLZ-188	CR-KGRLZ-188
G1/4	6/4	PGRLA-146	PGRLZ-146	KGRLA-146RSB	KGRLZ-146RSB	KGRLA-146	CR-KGRLA-146	KGRLZ-146	CR-KGRLZ-146
	8/6	PGRLA-148	PGRLZ-148	KGRLA-148RSB	KGRLZ-148RSB	KGRLA-148	CR-KGRLA-148	KGRLZ-148	CR-KGRLZ-148
	10/8	PGRLA-1410	PGRLZ-1410	KGRLA-1410RSB	KGRLZ-1410RSB	KGRLA-1410	CR-KGRLA-1410	KGRLZ-1410	CR-KGRLZ-1410
G3/8	6/4	PGRLA-386	PGRLZ-386	/	/	/	/	/	/
	8/6	PGRLA-388	PGRLZ-388	KGRLA-388RSB	KGRLZ-388RSB	KGRLA-388	/	KGRLZ-388	/
	10/8	PGRLA-3810	PGRLZ-3810	KGRLA-3810RSB	KGRLZ-3810RSB	KGRLA-3810	CR-KGRLA-3810	KGRLZ-3810	KGRLZ-3810
	12/9-10	PGRLA-3812	PGRLZ-3812	/	/	/	/	/	/
G1/2	10/8	PGRLA-1210	PGRLZ-1210	/	/	/	/	/	/
	12/9-10	PGRLA-1212	PGRLZ-1212	/	/	/	/	/	/

**HE3-PQS**



**QSDRV**



**QSDRV-S**



**RFB**



**CR-RFB**



**RFU**



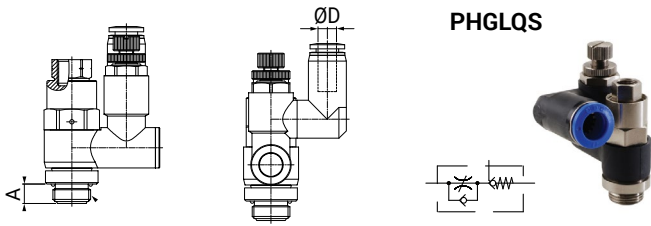
**CR-RFU**



Navoj Thread [A]	Cev Tube D [mm]	Tip Type	Tip Type	Tip Type	Tip Type	Tip Type	Tip Type	Tip Type
	4/2,5	HE3-PQS-40	QSDRV-40	QSDRV-S-40	/	/	/	/
	6/4	HE3-PQS-60	QSDRV-60	QSDRV-S-60	/	/	/	/
	8/6	HE3-PQS-80	QSDRV-80	QSDRV-S-80	/	/	/	/
	10/8	HE3-PQS-100	QSDRV-100	QSDRV-S-100	/	/	/	/
	12/9-10	HE3-PQS-120	QSDRV-120	QSDRV-S-120	/	/	/	/
M5		/	/	/	RFB-M5	/	RFU-M5	/
G1/8		/	/	/	RFB-18	CR-RFB-18	RFU-18	CR-RFU-18
G1/4		/	/	/	RFB-14	CR-RFB-14	RFU-14	CR-RFU-14
G3/8		/	/	/	RFB-38	/	RFU-38	/
G1/2		/	/	/	RFB-12	/	RFU-12	/

\*\* panelna vgradnja / panel-mounting

## DUŠILNI NEPOVRATNI PRIKLJUČEK / SPEED CONTROLLER WITH PILOT CHECK VALVE

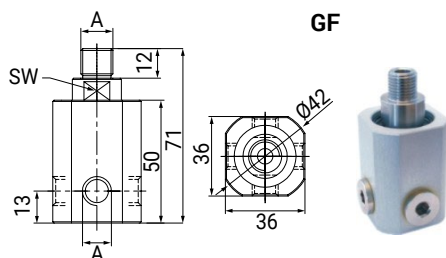


Navoj Thread [A]	Cev Tube D [mm]	Tip Type
G1/8	6/4	PHGLQS-186
	8/6	PHGLQS-188
G1/4	6/4	PHGLQS-146
	8/6	PHGLQS-148
G3/8	8/6	PHGLQS-388
	10/8	PHGLQS-3810
	12/9-10	PHGLQS-3812
G1/2	10/8	PHGLQS-1210
	12/9-10	PHGLQS-1212

## TEHNIČNI PODATKI / TECHNICAL FEATURES

Tip Type	Material		Tlak / Pressure		Temperatura / Temperature	
	Ohišje / Body	Tesnila / Seals	MIN. [bar]	MAX. [bar]	MIN. [°C]	MAX. [°C]
PGRLA/Z	PBT	NBR	0	10	0	60
PQSDRV/-S	PBT	NBR	0	10	0	60
PHGLQS	PBT-Medenina / PBT-Brass	NBR	1	10	0	60
KGRLA/Z	Medenina-niklano / Brass-nickel plated	NBR	0	10	-20	70
CR-KGRLA/Z	AISI 316 L	FPM	0	10	0	150
HE3 PQS	PBT	NBR	0	10	0	60
RFB/RFU	Aluminij / Aluminium	NBR	0	10	-20	80
CR-RFB/CR-RFU	AISI 316 L	FPM	0	10	0	150

## VRTLJIVI PRIKLJUČKI ROTATION FITTINGS



Tip Type	Navoj Thread [A]	SW
GF-14	1/4	17
GF-38	3/8	19

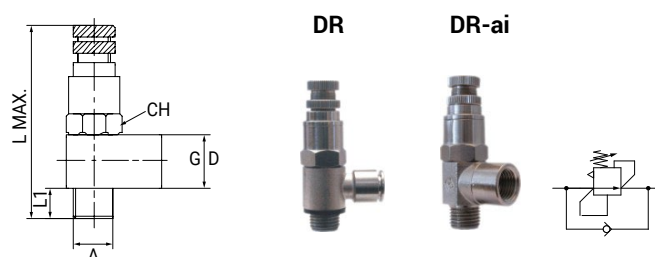
VRTLJIV PRIKLJUČEK TIP GF / ROTATIONAL FITTING TYPE GF

Max. tlak / Max. Pressure: 8 bar

Št. vrtljajev / Rpm: 350 min

Temperatura / Working temperature: max. 60 °C

## REGULATORJI TLAKA / PRESSURE REGULATOR



Tip Type	Navoj Thread [A]	Cev Tube D [mm]	Navoj Thread [C]	L1 [mm]	L MAX. [mm]	CH
DR-184	G1/8	4	/	6	56	15
DR-186	G1/8	6	/	6	56	15
DR-1818ai	G1/8	/	1/8	6	56	15
DR-146	G1/4	6	/	8	63	17
DR-148	G1/4	8	/	8	63	17
DR-1414ai	G1/4	/	1/4	8	63	17

PRECIZNI REGULATOR TLAKA TIP DR / PRECISION PRESSURE REGULATOR TYPE DR

Max. tlak / Max. Pressure: 10 bar

Območje regulacije / Regulation range: 1–8 bar

Temperatura / Working temperature: max. 60 °C

## FUNKCIJSKI ELEMENTI / FUNCTIONAL ELEMENTS

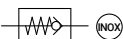
**VNR ai**  
Nepovratni ventil  
Check valve



**VNR**  
Nepovratni ventil  
Check valve



**CR-VNR**  
Nepovratni ventil  
Check valve



**HSV**  
Potezni ventil  
Slide valve



ON / OFF

**VSC**  
Hitro izpušni ventil  
Quick exhaust valve



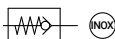
**MEMBRANA  
ZA VSC**  
Material PU



Navoj Thread [A]	Tip Type	L [mm]	Tip Type	L [mm]	Tip Type	L [mm]	Tip Type	L [mm]	Tip Type	L [mm]	Tip Type
M5	VNR M5 ai	34,5	VNR M5	26,5	/	/	/	/	/	/	/
G 1/8	VNR 18 ai	37,5	VNR 18	35,5	CR-VNR 18	40	HSV 18	48	VSC 18	42	D VSC 18
G 1/4	VNR 14 ai	46,5	VNR 14	43	CR-VNR 14	48	HSV 14	58	VSC 14	54	D VSC 14
G 3/8	VNR 38 ai	61	VNR 38	58	CR-VNR 38	51	HSV 38	70	VSC 38	60,5	DVSC 38
G 1/2	VNR 12 ai	64	VNR 12	63	CR-VNR 12	62	HSV 12	80	VSC 12	72	D VSC 12
G 3/4	/	/	/	/	/	/	/	/	VSC 34	88	D VSC 34
G 1	/	/	/	/	/	/	/	/	VSC 1	109	D VSC 1

## FUNKCIJSKI ELEMENTI / FUNCTIONAL ELEMENTS

**RUCK**  
Nepovratni ventil  
Check valve  
INOX



**SMF**  
Y čistilni kos  
Y Strainer



**RUCK-MS**  
Nepovratni ventil / Check valve  
G 1/2-G1 = PN12bar  
G 1/4-G2 = PN10bar



**IN / AND**



**ALI / OR**



Navoj Thread [A]	Tip Type	Tip Type	L [mm]	Tip Type	L [mm]	Tip Type	L [mm]	Tip Type	L [mm]	B [mm]	Tip Type	L [mm]	B [mm]
M5	/	/	/	/	/	/	/	IN M5	30	14	ALI M5	30	14
G 1/8	/	/	/	/	/	/	/	IN 18	30	14	ALI 18	30	14
G 1/4	RUCK 14-304	RUCK 14-316	55	SMF 14	55	/	/	/	/	/	/	/	/
G 3/8	RUCK 38-304	RUCK 38-316	55	SMF 38	55	/	/	/	/	/	/	/	/
G 1/2	RUCK 12-304	RUCK 12-316	55	SMF 12	58	RUCK 12	46	/	/	/	/	/	/
G 3/4	RUCK 34-304	RUCK 34-316	70	SMF 34	70	RUCK 34	52	/	/	/	/	/	/
G 1	RUCK 1-304	RUCK 1-316	84	SMF 1	87	RUCK 1	56	/	/	/	/	/	/
G 1 1/4	RUCK 1 1/4-304	RUCK 1 1/4-316	99	SMF 114	96	RUCK 1 1/4	64	/	/	/	/	/	/
G 1 1/2	RUCK 1 1/2-304	RUCK 1 1/2-316	119	SMF 112	106	RUCK 1 1/2	73	/	/	/	/	/	/
G 2	RUCK 2-304	RUCK 2-316	123	SMF 2	126	RUCK 2	78	/	/	/	/	/	/

## TEHNIČNI PODATKI / TECHNICAL FEATURES

Tip / Type	Material		Tlak / Pressure [bar]			Temperatura / Temperature [°C]	
	Ohišje / Body	Tesnila / Seals	Odpiralni tlaki Opening pressure	MIN.	MAX.	MIN.	MAX.
VNR ai	Medenina / Brass	NBR 70 O-ring	0,2	2	8	-20	80
VNR	Medenina / Brass	NBR 70 O-ring	0,2	2	8	-20	80
CR-VNR	AISI 316L	FPM	0,2	2	10	-10	150
HSV	Medenina, Aluminij / Brass, Aluminium	NBR 70 O-ring	/	/	10	-10	80
VSC	Medenina / Brass	PU, PA66 O-ring	/	0,3	10	-20	80
RUCK - 304	AISI 304	FPM	0,03		16	-20	150
RUCK - 316	AISI 316	FPM	0,03		16	-20	150
RUCK MS	Medenina / Brass	NBR 65SH/PS	0,02	1	12*	-20	100
SMF	Medenina, Bron / Brass, Bronze	NBR	18 bar - 80 °C 16 bar - 100 °C 10 bar - 120 °C				
IN/ALI / AND/OR	Aluminij / Aluminium	NBR		2	10	-10	60